

# Caspase-9 Rabbit mAb

Catalog No.: A11910

Recombinant

4 Publications

## Basic Information

### Observed MW

50kDa

### Calculated MW

46kDa

### Category

Primary antibody

### Applications

ELISA, WB, IHC-P, IF/ICC

### Cross-Reactivity

Human, Mouse, Rat

### CloneNo number

ARC5016-10

## Background

This gene encodes a member of the cysteine-aspartic acid protease (caspase) family. Sequential activation of caspases plays a central role in the execution-phase of cell apoptosis. Caspases exist as inactive proenzymes which undergo proteolytic processing at conserved aspartic residues to produce two subunits, large and small, that dimerize to form the active enzyme. This protein can undergo autoproteolytic processing and activation by the apoptosome, a protein complex of cytochrome c and the apoptotic peptidase activating factor 1; this step is thought to be one of the earliest in the caspase activation cascade. This protein is thought to play a central role in apoptosis and to be a tumor suppressor. Alternative splicing results in multiple transcript variants.

## Recommended Dilutions

WB	1:500 - 1:1000
IHC-P	1:500 - 1:1000
IF/ICC	1:50 - 1:100

## Immunogen Information

### Gene ID

842

### Swiss Prot

P55211

### Immunogen

Recombinant fusion protein containing a sequence corresponding to amino acids 139-416 of Caspase-9 (NP\_001220.2).

### Synonyms

MCH6; APAF3; APAF-3; PPP1R56; ICE-LAP6; Caspase-9

## Contact

 | [www.abclonal.com](http://www.abclonal.com)

## Product Information

### Source

Rabbit

### Isotype

IgG

### Purification

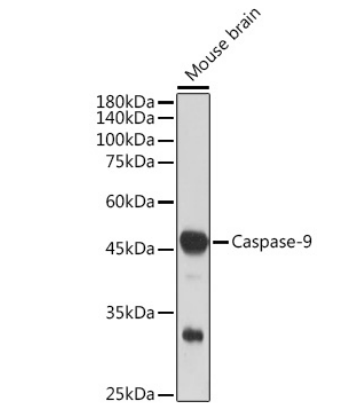
Affinity purification

### Storage

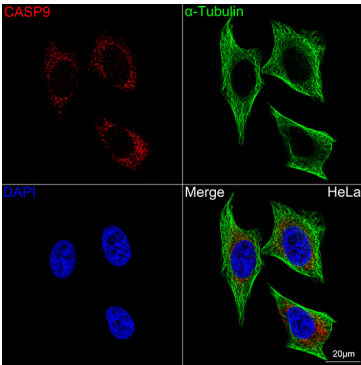
Store at -20°C. Avoid freeze / thaw cycles.

Buffer: PBS with 0.01% thimerosal, 0.05% BSA, 50% glycerol, pH 7.3.

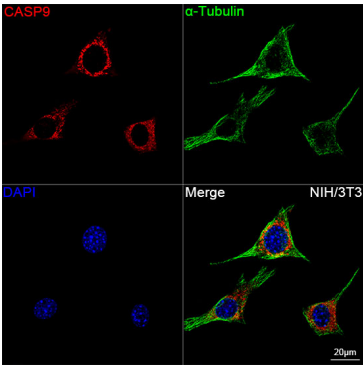
Validation Data



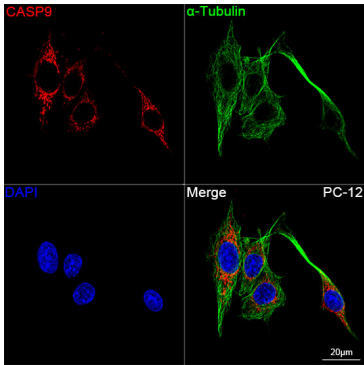
Western blot analysis of lysates from Mouse brain, using Caspase-9 Rabbit mAb (A11910) at 1:1000 dilution.  
Secondary antibody: HRP Goat Anti-Rabbit IgG (H+L) (AS014) at 1:10000 dilution.  
Lysates/proteins: 25µg per lane.  
Blocking buffer: 3% nonfat dry milk in TBST.  
Detection: ECL Basic Kit (RM00020).  
Exposure time: 10s.



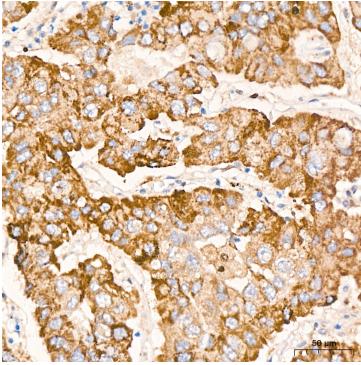
Confocal imaging of HeLa cells using Caspase-9 Rabbit mAb (A11910,dilution 1:100) followed by a further incubation with Cy3 Goat Anti-Rabbit IgG (H+L) (AS007,dilution 1:500)(Red).The cells were counterstained with α-Tubulin Mouse mAb (AC012, dilution 1:400) followed by incubation with ABflo® 488-conjugated Goat Anti-Mouse IgG (H+L) Ab (AS076, dilution 1:500) (Green).DAPI was used for nuclear staining (Blue). Objective: 100x.



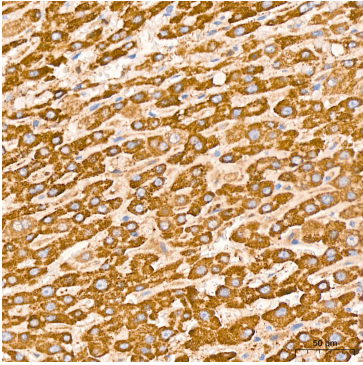
Confocal imaging of NIH/3T3 cells using Caspase-9 Rabbit mAb (A11910,dilution 1:100) followed by a further incubation with Cy3 Goat Anti-Rabbit IgG (H+L) (AS007,dilution 1:500)(Red).The cells were counterstained with α-Tubulin Mouse mAb (AC012, dilution 1:400) followed by incubation with ABflo® 488-conjugated Goat Anti-Mouse IgG (H+L) Ab (AS076, dilution 1:500) (Green).DAPI was used for nuclear staining (Blue). Objective: 100x.



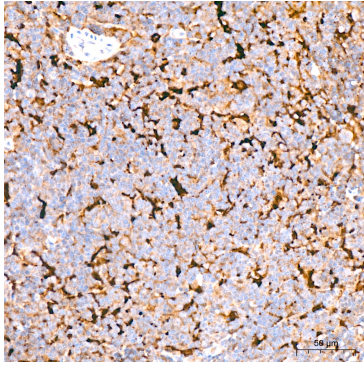
Confocal imaging of PC-12 cells using Caspase-9 Rabbit mAb (A11910,dilution 1:100) followed by a further incubation with Cy3 Goat Anti-Rabbit IgG (H+L) (AS007,dilution 1:500)(Red).The cells were counterstained with α-Tubulin Mouse mAb (AC012, dilution 1:400) followed by incubation with ABflo® 488-conjugated Goat Anti-Mouse IgG (H+L) Ab (AS076, dilution 1:500) (Green).DAPI was used for nuclear staining (Blue). Objective: 100x.



Immunohistochemistry analysis of Caspase-9 in paraffin-embedded human liver cancer tissue using Caspase-9 Rabbit mAb (A11910) at a dilution of 1:800 (40x lens).High pressure antigen retrieval was performed with 0.01 M citrate buffer (pH



Immunohistochemistry analysis of Caspase-9 in paraffin-embedded human liver tissue using Caspase-9 Rabbit mAb (A11910) at a dilution of 1:800 (40x lens).High pressure antigen retrieval was performed with 0.01 M citrate buffer (pH



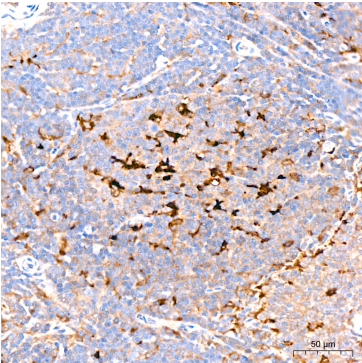
Immunohistochemistry analysis of Caspase-9 in paraffin-embedded mouse spleen tissue using Caspase-9 Rabbit mAb (A11910) at a dilution of 1:800 (40x lens).High pressure antigen retrieval was performed with 0.01 M citrate buffer (pH

Validation Data

6.0) prior to IHC staining.

6.0) prior to IHC staining.

6.0) prior to IHC staining.



Immunohistochemistry analysis of Caspase-9 in paraffin-embedded rat spleen tissue using Caspase-9 Rabbit mAb (A11910) at a dilution of 1:800 (40x lens).High pressure antigen retrieval was performed with 0.01 M citrate buffer (pH 6.0) prior to IHC staining.