

A1189

Leader in Biomolecular Solutions for Life Science



## CREB1 Rabbit pAb

Catalog No.: A1189

5 Publications

### Basic Information

#### Observed MW

45kDa

#### Calculated MW

35kDa

#### Category

Polyclonal Antibody

#### Applications

WB,IP,ELISA

#### Cross-Reactivity

Human,Mouse,Rat

### Background

This gene encodes a transcription factor that is a member of the leucine zipper family of DNA binding proteins. This protein binds as a homodimer to the cAMP-responsive element, an octameric palindrome. The protein is phosphorylated by several protein kinases, and induces transcription of genes in response to hormonal stimulation of the cAMP pathway. Alternate splicing of this gene results in several transcript variants encoding different isoforms.

### Recommended Dilutions

**WB** 1:500 - 1:2000

**IP** 0.5µg-4µg antibody for  
200µg-400µg extracts of  
whole cells

### Immunogen Information

#### Gene ID

1385

#### Swiss Prot

P16220

#### Immunogen

Recombinant fusion protein containing a sequence corresponding to amino acids 1-120 of human CREB1 (NP\_604391.1).

#### Synonyms

CREB; CREB-1; CREB1

### Contact



[www.abclonal.com](http://www.abclonal.com)

### Product Information

#### Source

Rabbit

#### Isotype

IgG

#### Purification

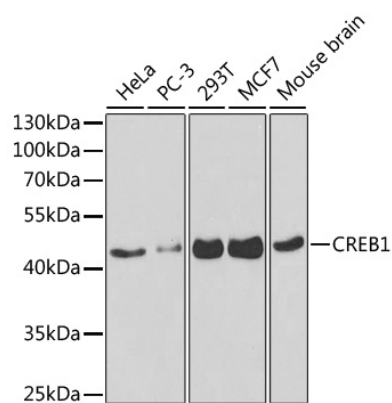
Affinity purification

#### Storage

Store at -20°C. Avoid freeze / thaw cycles.

Buffer: PBS with 0.02% sodium azide,50% glycerol,pH7.3.

## Validation Data



Western blot analysis of various lysates using CREB1 Rabbit pAb (A1189) at 1:1000 dilution.  
 Secondary antibody: HRP Goat Anti-Rabbit IgG (H+L) (A5014) at 1:10000 dilution.  
 Lysates/proteins: 25µg per lane.  
 Blocking buffer: 3% nonfat dry milk in TBST.

Immunoprecipitation analysis of 200 µg extracts of 293T cells using 1 µg CREB1 antibody (A1189).  
 Western blot was performed from the immunoprecipitate using CREB1 antibody (A1189) at a dilution of 1:1000.

