

A1180

Leader in Biomolecular Solutions for Life Science



## RAB5A Rabbit pAb

Catalog No.: A1180

3 Publications

### Basic Information

#### Observed MW

24kDa

#### Calculated MW

24kDa

#### Category

Mouse Monoclonal Antibody

#### Applications

WB, IHC-P, IF/ICC, ELISA

#### Cross-Reactivity

Human, Mouse, Rat

### Background

Enables GDP binding activity; GTP binding activity; and GTPase activity. Involved in several processes, including amyloid-beta clearance by transcytosis; early endosome to late endosome transport; and regulation of exocytosis. Located in several cellular components, including cytoplasmic side of early endosome membrane; nucleoplasm; and terminal bouton.

### Recommended Dilutions

WB	1:500 - 1:1000
IHC-P	1:50 - 1:200
IF/ICC	1:50 - 1:200

### Immunogen Information

#### Gene ID

5868

#### Swiss Prot

P20339

#### Immunogen

Recombinant fusion protein containing a sequence corresponding to amino acids 1-215 of human RAB5A (NP\_004153.2).

#### Synonyms

RAB5; RAB5A

### Contact



[www.abclonal.com](http://www.abclonal.com)

### Product Information

#### Source

Rabbit

#### Isotype

IgG

#### Purification

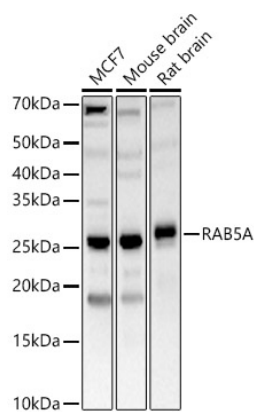
Affinity purification

#### Storage

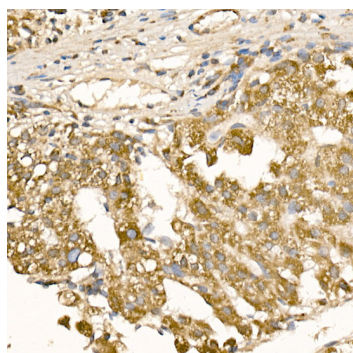
Store at -20°C. Avoid freeze / thaw cycles.

Buffer: PBS with 0.01% thimerosal, 50% glycerol, pH7.3.

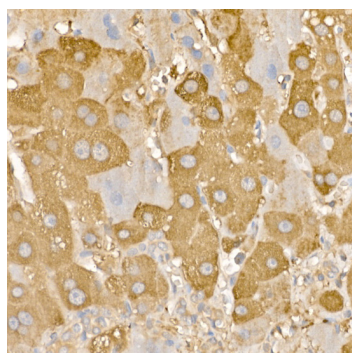
## Validation Data



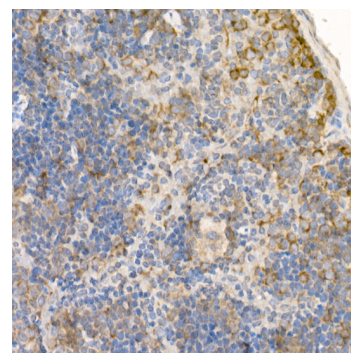
Western blot analysis of various lysates, using RAB5A antibody (A1180) at 1:700 dilution. Secondary antibody: HRP Goat Anti-Rabbit IgG (H+L) (A5014) at 1:10000 dilution. Lysates/proteins: 25µg per lane. Blocking buffer: 3% nonfat dry milk in TBST. Detection: ECL Basic Kit (RM00020). Exposure time: 30s.



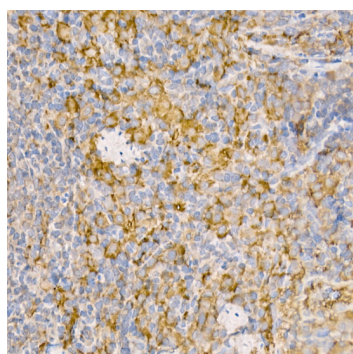
Immunohistochemistry analysis of paraffin-embedded human liver cancer using RAB5A Rabbit pAb (A1180) at dilution of 1:100 (40x lens). Perform high pressure antigen retrieval with 10 mM citrate buffer pH 6.0 before commencing with IHC staining protocol.



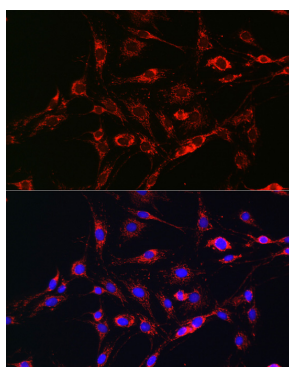
Immunohistochemistry analysis of paraffin-embedded human liver using RAB5A Rabbit pAb (A1180) at dilution of 1:100 (40x lens). Perform high pressure antigen retrieval with 10 mM citrate buffer pH 6.0 before commencing with IHC staining protocol.



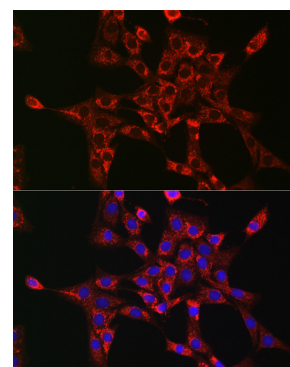
Immunohistochemistry analysis of paraffin-embedded mouse spleen using RAB5A Rabbit pAb (A1180) at dilution of 1:100 (40x lens). Perform high pressure antigen retrieval with 10 mM citrate buffer pH 6.0 before commencing with IHC staining protocol.



Immunohistochemistry analysis of paraffin-embedded rat spleen using RAB5A Rabbit pAb (A1180) at dilution of 1:100 (40x lens). Perform high pressure antigen retrieval with 10 mM citrate buffer pH 6.0 before commencing with IHC staining protocol.



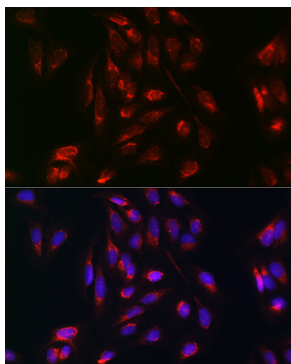
Immunofluorescence analysis of C6 cells using RAB5A Rabbit pAb (A1180) at dilution of 1:100 (40x lens). Blue: DAPI for nuclear staining.



Immunofluorescence analysis of NIH-3T3 cells using RAB5A Rabbit pAb (A1180) at dilution of 1:100 (40x lens). Blue: DAPI for nuclear staining.

## Validation Data

---



Immunofluorescence analysis of U-2 OS cells using RAB5A Rabbit pAb (A1180) at dilution of 1:100 (40x lens). Blue: DAPI for nuclear staining.