

A11761

Leader in Biomolecular Solutions for Life Science



Beclin 1 Rabbit pAb

Catalog No.: A11761

3 Publications

Basic Information

Observed MW

52kDa

Calculated MW

52kDa

Category

Mouse Monoclonal Antibody

Applications

WB,IP,ELISA

Cross-Reactivity

Human,Mouse

Background

This gene encodes a protein that regulates autophagy, a catabolic process of degradation induced by starvation. The encoded protein is a component of the phosphatidylinositol-3-kinase (PI3K) complex which mediates vesicle-trafficking processes. This protein is thought to play a role in multiple cellular processes, including tumorigenesis, neurodegeneration and apoptosis. Alternative splicing results in multiple transcript variants.

Recommended Dilutions

WB 1:500 - 1:2000

IP 0.5µg-4µg antibody for
200µg-400µg extracts of
whole cells

Immunogen Information

Gene ID

8678

Swiss Prot

Q14457

Immunogen

Recombinant fusion protein containing a sequence corresponding to amino acids 1-280 of human Beclin 1 (NP_003757.1).

Synonyms

ATG6; VPS30; beclin1; Beclin 1

Contact



www.abclonal.com

Product Information

Source

Rabbit

Isotype

IgG

Purification

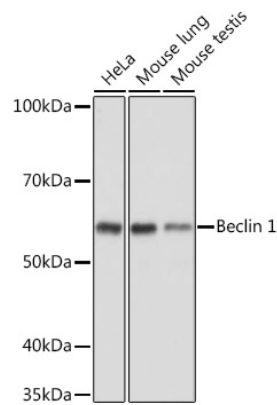
Affinity purification

Storage

Store at -20°C. Avoid freeze / thaw cycles.

Buffer: PBS with 0.01% thimerosal, 50% glycerol, pH7.3.

Validation Data



Western blot analysis of various lysates using Beclin 1 Rabbit pAb (A11761) at 1:1000 dilution.
Secondary antibody: HRP Goat Anti-Rabbit IgG (H+L) (AS014) at 1:10000 dilution.
Lysates/proteins: 25µg per lane.
Blocking buffer: 3% nonfat dry milk in TBST.
Detection: ECL Basic Kit (RM00020).
Exposure time: 30s.

Immunoprecipitation analysis of 300 µg extracts of HeLa cells using 3 µg Beclin 1 antibody (A11761).
Western blot was performed from the immunoprecipitate using Beclin 1 antibody (A11761) at a dilution of 1:1000.

