

A11723

Leader in Biomolecular Solutions for Life Science



BRINP1 Rabbit pAb

Catalog No.: A11723

Basic Information

Observed MW

105kDa

Calculated MW

89kDa

Category

Polyclonal Antibody

Applications

WB, ELISA

Cross-Reactivity

Human

Background

This gene is located within a chromosomal region that shows loss of heterozygosity in some bladder cancers. It contains a 5' CpG island that may be a frequent target of hypermethylation, and it may undergo hypermethylation-based silencing in some bladder cancers.

Recommended Dilutions

WB 1:500 - 1:2000

Immunogen Information

Gene ID

1620

Swiss Prot

O60477

Immunogen

Recombinant fusion protein containing a sequence corresponding to amino acids 20-300 of human BRINP1 (NP_055433.2).

Synonyms

DBC1; FAM5A; DBCCR1; BRINP1

Contact



www.abclonal.com

Product Information

Source

Rabbit

Isotype

IgG

Purification

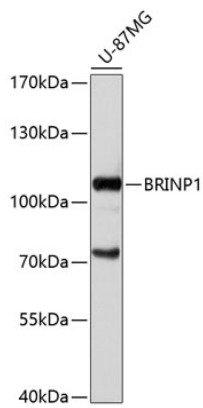
Affinity purification

Storage

Store at -20°C. Avoid freeze / thaw cycles.

Buffer: PBS with 0.01% thimerosal, 50% glycerol, pH 7.3.

Validation Data



Western blot analysis of lysates from U-87MG cells, using BRINP1 Rabbit pAb (A11723) at 1:1000 dilution.
Secondary antibody: HRP Goat Anti-Rabbit IgG (H+L) (A5014) at 1:10000 dilution.
Lysates/proteins: 25µg per lane.
Blocking buffer: 3% nonfat dry milk in TBST.
Detection: ECL Basic Kit (RM00020).
Exposure time: 1s.