

A11685

Leader in Biomolecular Solutions for Life Science



## OSTM1 Rabbit pAb

Catalog No.: A11685

### Basic Information

#### Observed MW

30-37kDa

#### Calculated MW

37kDa

#### Category

Mouse Monoclonal Antibody

#### Applications

WB, ELISA

#### Cross-Reactivity

Human, Mouse

### Background

This gene encodes a protein that may be involved in the degradation of G proteins via the ubiquitin-dependent proteasome pathway. The encoded protein binds to members of subfamily A of the regulator of the G-protein signaling (RGS) family through an N-terminal leucine-rich region. This protein also has a central RING finger-like domain and E3 ubiquitin ligase activity. This protein is highly conserved from flies to humans. Defects in this gene may cause the autosomal recessive, infantile malignant form of osteopetrosis.

### Recommended Dilutions

WB 1:500 - 1:2000

### Immunogen Information

#### Gene ID

28962

#### Swiss Prot

Q86WC4

#### Immunogen

Recombinant fusion protein containing a sequence corresponding to amino acids 32-284 of human OSTM1 (NP\_054747.2).

#### Synonyms

GL; GIPN; OPTB5; HSPC019; OSTM1

### Contact



[www.abclonal.com](http://www.abclonal.com)

### Product Information

#### Source

Rabbit

#### Isotype

IgG

#### Purification

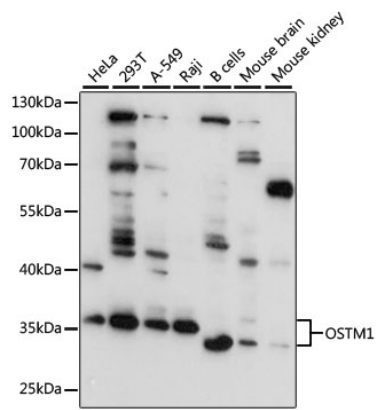
Affinity purification

#### Storage

Store at -20°C. Avoid freeze / thaw cycles.

Buffer: PBS with 0.01% thimerosal, 50% glycerol, pH 7.3.

Validation Data



Western blot analysis of various lysates using OSTM1 Rabbit pAb (A11685) at 1:3000 dilution. Secondary antibody: HRP Goat Anti-Rabbit IgG (H+L) (AS014) at 1:10000 dilution. Lysates/proteins: 25µg per lane. Blocking buffer: 3% nonfat dry milk in TBST. Detection: ECL Basic Kit (RM00020). Exposure time: 10s.