

A11676

Leader in Biomolecular Solutions for Life Science



PNPT1 Rabbit pAb

Catalog No.: A11676

Basic Information

Observed MW

110kDa

Calculated MW

86kDa

Category

Polyclonal Antibody

Applications

WB, ELISA

Cross-Reactivity

Human

Background

The protein encoded by this gene belongs to the evolutionary conserved polynucleotide phosphorylase family comprised of phosphate dependent 3'-to-5' exoribonucleases implicated in RNA processing and degradation. This enzyme is predominantly localized in the mitochondrial intermembrane space and is involved in import of RNA to mitochondria. Mutations in this gene have been associated with combined oxidative phosphorylation deficiency-13 and autosomal recessive nonsyndromic deafness-70. Related pseudogenes are found on chromosomes 3 and 7.

Recommended Dilutions

WB 1:500 - 1:2000

Immunogen Information

Gene ID

87178

Swiss Prot

Q8TCS8

Immunogen

Recombinant fusion protein containing a sequence corresponding to amino acids 1-260 of human PNPT1 (NP_149100.2).

Synonyms

OLD35; SCA25; DFNB70; PNPASE; old-35; COXPD13; PNPT1

Contact



www.abclonal.com

Product Information

Source

Rabbit

Isotype

IgG

Purification

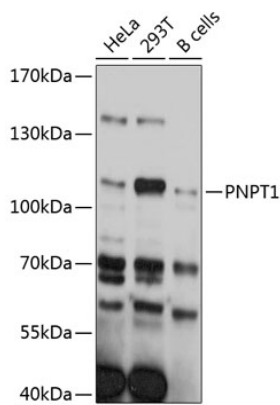
Affinity purification

Storage

Store at -20°C. Avoid freeze / thaw cycles.

Buffer: PBS with 0.01% thimerosal, 50% glycerol, pH 7.3.

Validation Data



Western blot analysis of various lysates using PNPT1 Rabbit pAb (A11676) at 1:3000 dilution.
Secondary antibody: HRP Goat Anti-Rabbit IgG (H+L) (AS014) at 1:10000 dilution.
Lysates/proteins: 25µg per lane.
Blocking buffer: 3% nonfat dry milk in TBST.
Detection: ECL Basic Kit (RM00020).
Exposure time: 10s.