

A1166

Leader in Biomolecular Solutions for Life Science



SMPD2 Rabbit pAb

Catalog No.: A1166

Basic Information

Observed MW

50kDa

Calculated MW

48kDa

Category

Polyclonal Antibody

Applications

WB, ELISA

Cross-Reactivity

Mouse, Rat

Background

This gene encodes a protein which was initially identified as a sphingomyelinase based on sequence similarity between bacterial sphingomyelinases and a yeast protein. Subsequent studies showed that its biological function is less likely to be as a sphingomyelinase and instead as a lysophospholipase.

Recommended Dilutions

WB 1:500 - 1:2000

Immunogen Information

Gene ID

6610

Swiss Prot

O60906

Immunogen

A synthetic peptide corresponding to a sequence within amino acids 150-250 of human SMPD2 (NP_003071.2).

Synonyms

ISC1; NSMASE; NSMASE1; SMPD2

Contact



www.abclonal.com

Product Information

Source

Rabbit

Isotype

IgG

Purification

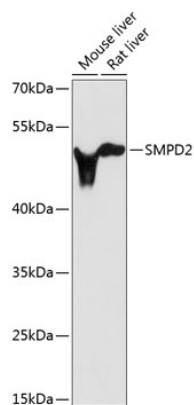
Affinity purification

Storage

Store at -20°C. Avoid freeze / thaw cycles.

Buffer: PBS with 0.01% thimerosal, 50% glycerol, pH 7.3.

Validation Data



Western blot analysis of various lysates using SMPD2 Rabbit pAb (A1166) at 1:3000 dilution.
Secondary antibody: HRP Goat Anti-Rabbit IgG (H+L) (AS014) at 1:10000 dilution.
Lysates/proteins: 25µg per lane.
Blocking buffer: 3% nonfat dry milk in TBST.
Detection: ECL Basic Kit (RM00020).
Exposure time: 90s.