

A11642

Leader in Biomolecular Solutions for Life Science



beta 2 Microglobulin Rabbit mAb

Catalog No.: A11642 **Recombinant**

Basic Information

Observed MW

14kDa

Calculated MW

14kDa

Category

SMab Recombinant Monoclonal Antibody

Applications

WB, IHC-P, ELISA

Cross-Reactivity

Human, Mouse, Rat

CloneNo number

ARC0656

Background

This gene encodes a serum protein found in association with the major histocompatibility complex (MHC) class I heavy chain on the surface of nearly all nucleated cells. The protein has a predominantly beta-pleated sheet structure that can form amyloid fibrils in some pathological conditions. The encoded antimicrobial protein displays antibacterial activity in amniotic fluid. A mutation in this gene has been shown to result in hypercatabolic hypoproteinemia.

Recommended Dilutions

WB 1:500 - 1:2000

IHC-P 1:1000 - 1:5000

Immunogen Information

Gene ID

567

Swiss Prot

P61769

Immunogen

A synthetic peptide corresponding to a sequence within amino acids 40-119 of human beta 2 Microglobulin (P61769).

Synonyms

IMD43; beta 2 Microglobulin

Contact



www.abclonal.com

Product Information

Source

Rabbit

Isotype

IgG

Purification

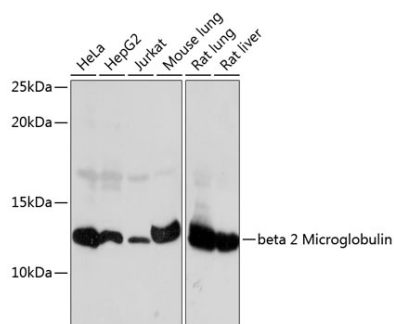
Affinity purification

Storage

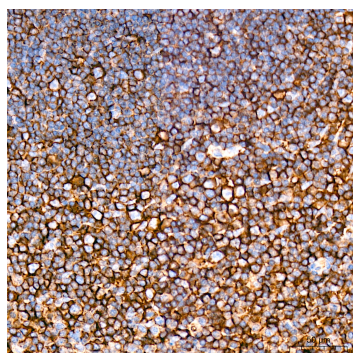
Store at -20°C. Avoid freeze / thaw cycles.

Buffer: PBS with 0.02% sodium azide, 0.05% BSA, 50% glycerol, pH7.3.

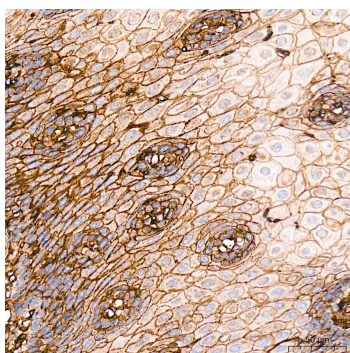
Validation Data



Western blot analysis of various lysates using beta 2 Microglobulin Rabbit mAb (A11642) at 1:1000 dilution.
Secondary antibody: HRP Goat Anti-Rabbit IgG (H+L) (AS014) at 1:10000 dilution.
Lysates/proteins: 25µg per lane.
Blocking buffer: 3% nonfat dry milk in TBST.
Detection: ECL Basic Kit (RM00020).
Exposure time: 30s.



Immunohistochemistry analysis of beta 2 Microglobulin in paraffin-embedded human tonsil tissue using beta 2 Microglobulin Rabbit mAb (A11642) at a dilution of 1:2000 (40x lens). High pressure antigen retrieval was performed with 0.01 M citrate buffer (pH 6.0) prior to IHC staining.



Immunohistochemistry analysis of beta 2 Microglobulin in paraffin-embedded human esophagus tissue using beta 2 Microglobulin Rabbit mAb (A11642) at a dilution of 1:2000 (40x lens). High pressure antigen retrieval was performed with 0.01 M citrate buffer (pH 6.0) prior to IHC staining.