

A11610

Leader in Biomolecular Solutions for Life Science



NAP1L1 Rabbit pAb

Catalog No.: A11610

Basic Information

Observed MW

57kDa

Calculated MW

45kDa

Category

Polyclonal Antibody

Applications

WB, ELISA

Cross-Reactivity

Human, Mouse

Background

This gene encodes a member of the nucleosome assembly protein (NAP) family. This protein participates in DNA replication and may play a role in modulating chromatin formation and contribute to the regulation of cell proliferation. Alternative splicing results in multiple transcript variants encoding different isoforms; however, not all have been fully described.

Recommended Dilutions

WB 1:500 - 1:2000

Immunogen Information

Gene ID

4673

Swiss Prot

P55209

Immunogen

Recombinant fusion protein containing a sequence corresponding to amino acids 1-170 of human NAP1L1 (NP_004528.1).

Synonyms

NRP; NAP1; NAP1L; NAP1L1

Contact



www.abclonal.com

Product Information

Source

Rabbit

Isotype

IgG

Purification

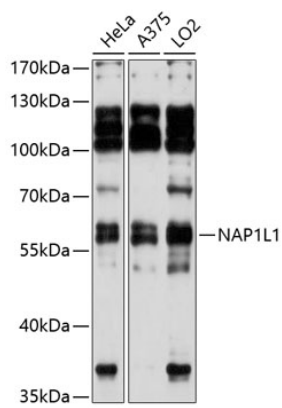
Affinity purification

Storage

Store at -20°C. Avoid freeze / thaw cycles.

Buffer: PBS with 0.01% thimerosal, 50% glycerol, pH 7.3.

Validation Data



Western blot analysis of various lysates using NAP1L1 Rabbit pAb (A11610) at 1:3000 dilution.
Secondary antibody: HRP Goat Anti-Rabbit IgG (H+L) (AS014) at 1:10000 dilution.
Lysates/proteins: 25µg per lane.
Blocking buffer: 3% nonfat dry milk in TBST.
Detection: ECL Basic Kit (RM00020).
Exposure time: 20s.