

A11607

Leader in Biomolecular Solutions for Life Science



## MAGEA4 Rabbit pAb

Catalog No.: A11607

### Basic Information

**Observed MW**

50kDa

**Calculated MW**

35kDa

**Category**

Mouse Monoclonal Antibody

**Applications**

WB, ELISA

**Cross-Reactivity**

Human, Mouse, Rat

### Background

This gene is a member of the MAGEA gene family. The members of this family encode proteins with 50 to 80% sequence identity to each other. The promoters and first exons of the MAGEA genes show considerable variability, suggesting that the existence of this gene family enables the same function to be expressed under different transcriptional controls. The MAGEA genes are clustered at chromosomal location Xq28. They have been implicated in some hereditary disorders, such as dyskeratosis congenita. Several variants encoding the same protein have been found for this gene.

### Recommended Dilutions

WB 1:500 - 1:2000

### Immunogen Information

**Gene ID**

4103

**Swiss Prot**

P43358

**Immunogen**

Recombinant fusion protein containing a sequence corresponding to amino acids 28-317 of human MAGEA4 (NP\_002353.3).

**Synonyms**

CT1.4; MAGE4; MAGE4A; MAGE4B; MAGE-41; MAGE-X2; MAGEA4

### Contact



[www.abclonal.com](http://www.abclonal.com)

### Product Information

**Source**

Rabbit

**Isotype**

IgG

**Purification**

Affinity purification

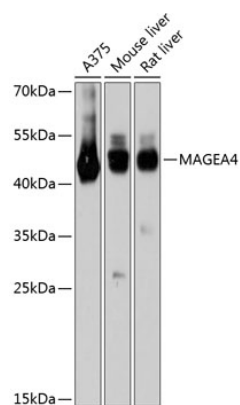
**Storage**

Store at -20°C. Avoid freeze / thaw cycles.

Buffer: PBS with 0.01% thimerosal, 50% glycerol, pH7.3.

## Validation Data

---



Western blot analysis of various lysates using MAGEA4 Rabbit pAb (A11607) at 1:3000 dilution.  
Secondary antibody: HRP Goat Anti-Rabbit IgG (H+L) (AS014) at 1:10000 dilution.  
Lysates/proteins: 25µg per lane.  
Blocking buffer: 3% nonfat dry milk in TBST.  
Detection: ECL Basic Kit (RM00020).  
Exposure time: 10s.