

A11578

Leader in Biomolecular Solutions for Life Science



## GSK3 $\beta$ Rabbit pAb

Catalog No.: A11578

### Basic Information

**Observed MW**

46kDa

**Calculated MW**

47kDa

**Category**

Polyclonal Antibody

**Applications**

WB, ELISA

**Cross-Reactivity**

Human

### Background

The protein encoded by this gene is a serine-threonine kinase belonging to the glycogen synthase kinase subfamily. It is a negative regulator of glucose homeostasis and is involved in energy metabolism, inflammation, ER-stress, mitochondrial dysfunction, and apoptotic pathways. Defects in this gene have been associated with Parkinson disease and Alzheimer disease.

### Recommended Dilutions

WB 1:500 - 1:2000

### Immunogen Information

**Gene ID**

2932

**Swiss Prot**

P49841

**Immunogen**

A synthetic peptide corresponding to a sequence within amino acids 320-420 of human GSK3 $\beta$  (NP\_001139628.1).

**Synonyms**

GSK3B; gsk-3 $\beta$ ; GSK3 $\beta$

### Contact



[www.abclonal.com](http://www.abclonal.com)

### Product Information

**Source**

Rabbit

**Isotype**

IgG

**Purification**

Affinity purification

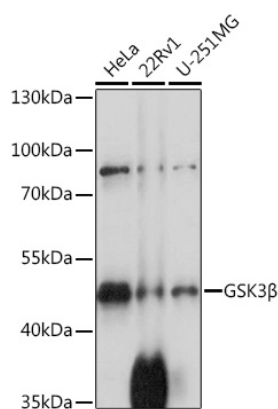
**Storage**

Store at -20°C. Avoid freeze / thaw cycles.

Buffer: PBS with 0.02% sodium azide, 50% glycerol, pH 7.3.

## Validation Data

---



Western blot analysis of various lysates using GSK3 $\beta$  Rabbit pAb (A11578) at 1:1000 dilution.  
Secondary antibody: HRP Goat Anti-Rabbit IgG (H+L) (AS014) at 1:10000 dilution.  
Lysates/proteins: 25 $\mu$ g per lane.  
Blocking buffer: 3% nonfat dry milk in TBST.  
Detection: ECL Basic Kit (RM00020).  
Exposure time: 15s.