

A11574

Leader in Biomolecular Solutions for Life Science



## CHD4 Rabbit pAb

Catalog No.: A11574

1 Publications

### Basic Information

#### Observed MW

280kDa

#### Calculated MW

218kDa

#### Category

Polyclonal Antibody

#### Applications

WB, IHC-P, IF/ICC, ELISA

#### Cross-Reactivity

Human, Mouse, Rat

### Background

The product of this gene belongs to the SNF2/RAD54 helicase family. It represents the main component of the nucleosome remodeling and deacetylase complex and plays an important role in epigenetic transcriptional repression. Patients with dermatomyositis develop antibodies against this protein. Somatic mutations in this gene are associated with serous endometrial tumors. Alternative splicing results in multiple transcript variants encoding different isoforms.

### Recommended Dilutions

WB	1:500 - 1:2000
IHC-P	1:100 - 1:200
IF/ICC	1:50 - 1:200

### Immunogen Information

#### Gene ID

1108

#### Swiss Prot

Q14839

#### Immunogen

Recombinant fusion protein containing a sequence corresponding to amino acids 1520-1690 of human CHD4 (NP\_001264.2).

#### Synonyms

CHD-4; Mi-2b; SIHIWES; Mi2-BETA; CHD4

### Contact



[www.abclonal.com](http://www.abclonal.com)

### Product Information

#### Source

Rabbit

#### Isotype

IgG

#### Purification

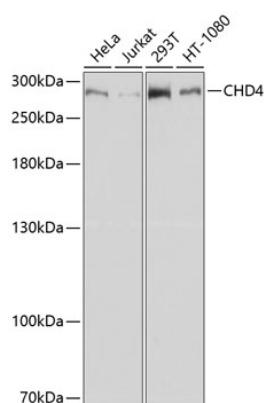
Affinity purification

#### Storage

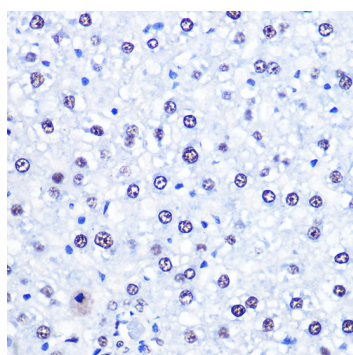
Store at -20°C. Avoid freeze / thaw cycles.

Buffer: PBS with 0.02% sodium azide, 50% glycerol, pH 7.3.

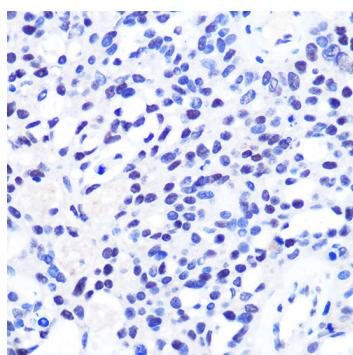
## Validation Data



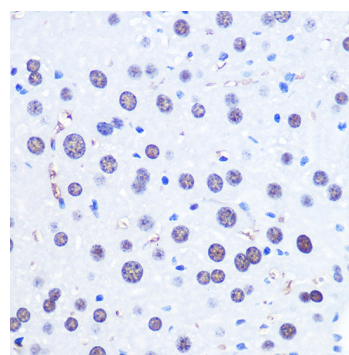
Western blot analysis of extracts of various cell lines, using CHD4 antibody (A11574) at 1:1000 dilution.  
 Secondary antibody: HRP Goat Anti-Rabbit IgG (H+L) (A5014) at 1:10000 dilution.  
 Lysates/proteins: 25µg per lane.  
 Blocking buffer: 3% nonfat dry milk in TBST.  
 Detection: ECL Basic Kit (RM00020).  
 Exposure time: 30s.



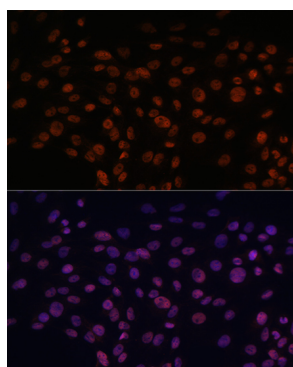
Immunohistochemistry analysis of paraffin-embedded rat liver using CHD4 Rabbit pAb (A11574) at dilution of 1:100 (40x lens). Perform microwave antigen retrieval with 10 mM PBS buffer pH 7.2 before commencing with IHC staining protocol.



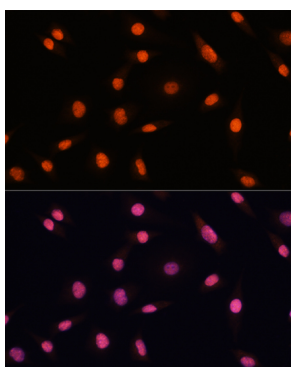
Immunohistochemistry analysis of paraffin-embedded human oophoroma using CHD4 Rabbit pAb (A11574) at dilution of 1:100 (40x lens). Perform microwave antigen retrieval with 10 mM PBS buffer pH 7.2 before commencing with IHC staining protocol.



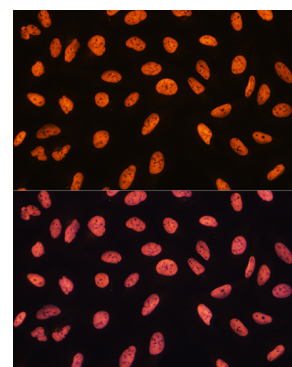
Immunohistochemistry analysis of paraffin-embedded mouse liver using CHD4 Rabbit pAb (A11574) at dilution of 1:100 (40x lens). Perform microwave antigen retrieval with 10 mM PBS buffer pH 7.2 before commencing with IHC staining protocol.



Immunofluorescence analysis of C6 cells using CHD4 antibody (A11574) at dilution of 1:100. Blue: DAPI for nuclear staining.



Immunofluorescence analysis of L929 cells using CHD4 antibody (A11574) at dilution of 1:100. Blue: DAPI for nuclear staining.



Immunofluorescence analysis of U20S cells using CHD4 antibody (A11574) at dilution of 1:100. Blue: DAPI for nuclear staining.