

[KO Validated] KDM1A Polyclonal Antibody

Catalog No.	A1156	Category	Polyclonal Antibodies
Applications	WB, IF, IP	Observed MW	96-117kDa
Cross-reactivity	Human, Mouse, Rat	Calculated MW	92kDa/95kDa

Immunogen Information

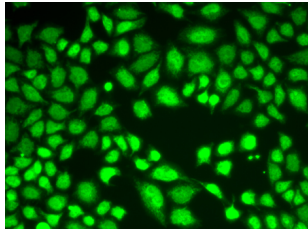
Immunogen	Recombinant fusion protein containing a sequence corresponding to amino acids 130-380 of human KDM1A (NP_055828.2).
Gene ID	23028
Swiss prot	O60341
Synonyms	KDM1A; AOF2; BHC110; CPRF; KDM1; LSD1; lysine demethylase 1A

Product information

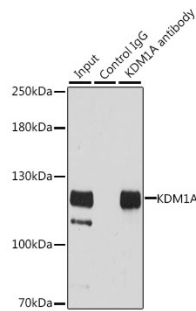
Source	Rabbit
Isotype	IgG
Purification method	Affinity purification
Storage	Store at -20°C. Avoid freeze / thaw cycles. Buffer: PBS with 0.02% sodium azide, 50% glycerol, pH7.3.

Background

This gene encodes a nuclear protein containing a SWIRM domain, a FAD-binding motif, and an amine oxidase domain. This protein is a component of several histone deacetylase complexes, though it silences genes by functioning as a histone demethylase. Alternative splicing results in multiple transcript variants.



Immunofluorescence - [KO Validated] KDM1A Polyclonal Antibody (A1156)



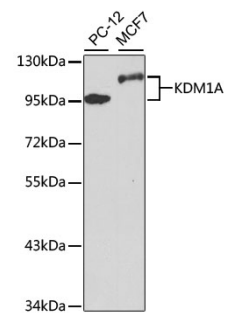
Immunoprecipitation - [KO Validated] KDM1A Polyclonal Antibody (A1156)

Recommended Dilutions

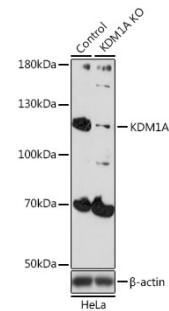
WB 1:500 -
1:2000

IF 1:50 -
1:100

IP 1:50 -
1:100



Western blot - [KO Validated] KDM1A Polyclonal Antibody (A1156)



Western blot - [KO Validated] KDM1A Polyclonal Antibody (A1156)