

A11532

Leader in Biomolecular Solutions for Life Science



# [KD Validated] Proprotein Convertase 9(PCSK9) Rabbit mAb

Catalog No.: A11532 **Recombinant**

## Basic Information

### Observed MW

65kDa/80kDa

### Calculated MW

74kDa

### Category

SMab Recombinant Monoclonal Antibody

### Applications

WB, ELISA

### Cross-Reactivity

Human

### CloneNo number

ARC50558

## Background

This gene encodes a member of the subtilisin-like proprotein convertase family, which includes proteases that process protein and peptide precursors trafficking through regulated or constitutive branches of the secretory pathway. The encoded protein undergoes an autocatalytic processing event with its prosegment in the ER and is constitutively secreted as an inactive protease into the extracellular matrix and trans-Golgi network. It is expressed in liver, intestine and kidney tissues and escorts specific receptors for lysosomal degradation. It plays a role in cholesterol and fatty acid metabolism. Mutations in this gene have been associated with autosomal dominant familial hypercholesterolemia. Alternative splicing results in multiple transcript variants.

## Recommended Dilutions

WB 1:500 - 1:1000

## Immunogen Information

### Gene ID

255738

### Swiss Prot

Q8NBP7

### Immunogen

A synthetic peptide corresponding to a sequence within amino acids 593-692 of human Proprotein Convertase 9(PCSK9) (NP\_777596.2).

### Synonyms

FH3; PC9; FHCL3; NARC1; LDLCQ1; NARC-1; HCHOLA3; [KD Validated] Proprotein Convertase 9(PCSK9)

## Contact



[www.abclonal.com](http://www.abclonal.com)

## Product Information

### Source

Rabbit

### Isotype

IgG

### Purification

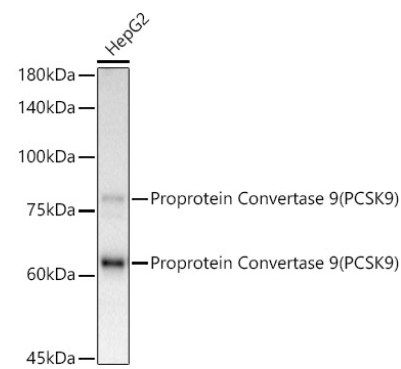
Affinity purification

### Storage

Store at -20°C. Avoid freeze / thaw cycles.

Buffer: PBS with 0.05% proclin300, 0.05% BSA, 50% glycerol, pH7.3.

Validation Data



Western blot analysis of lysates from HepG2 cells, using [KD Validated] Proprotein Convertase 9(PCSK9) Rabbit mAb (A11532) at1:1000 dilution.  
Secondary antibody: HRP Goat Anti-Rabbit IgG (H+L) (AS014) at1:10000 dilution.  
Lysates/proteins: 25µg per lane.  
Blocking buffer: 3% nonfat dry milk in TBST.  
Detection: ECL Basic Kit (RM00020).  
Exposure time: 60s.

Western blot analysis of lysates from wild type(WT) and Proprotein Convertase 9(PCSK9) knockdown (KD) HeLa cells, using Proprotein Convertase 9(PCSK9) Rabbit mAb (A11532) at 1:1000 dilution.  
Secondary antibody: HRP Goat Anti-Rabbit IgG (H+L) (AS014) at 1:10000 dilution.  
Lysates/proteins: 25µg per lane.  
Blocking buffer: 3% nonfat dry milk in TBST.  
Detection: ECL Basic Kit (RM00020).  
Exposure time: 60s.

