

A11469

Leader in Biomolecular Solutions for Life Science



MAD2/MAD2L1 Rabbit mAb

Catalog No.: A11469

Recombinant

1 Publications

Basic Information

Observed MW

24kDa

Calculated MW

24kDa

Category

SMab Recombinant Monoclonal Antibody

Applications

WB, IHC-P, ELISA

Cross-Reactivity

Human, Mouse, Rat

CloneNo number

ARC0603

Background

MAD2L1 is a component of the mitotic spindle assembly checkpoint that prevents the onset of anaphase until all chromosomes are properly aligned at the metaphase plate. MAD2L1 is related to the MAD2L2 gene located on chromosome 1. A MAD2 pseudogene has been mapped to chromosome 14.

Recommended Dilutions

WB 1:500 - 1:2000

IHC-P 1:50 - 1:200

Immunogen Information

Gene ID

4085

Swiss Prot

Q13257

Immunogen

A synthetic peptide corresponding to a sequence within amino acids 70-150 of human MAD2/MAD2L1 (Q13257).

Synonyms

MAD2; HSMAD2; MAD2/MAD2L1

Contact



www.abclonal.com

Product Information

Source

Rabbit

Isotype

IgG

Purification

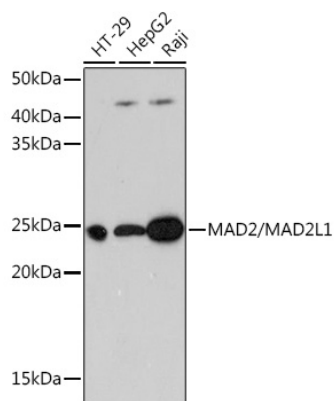
Affinity purification

Storage

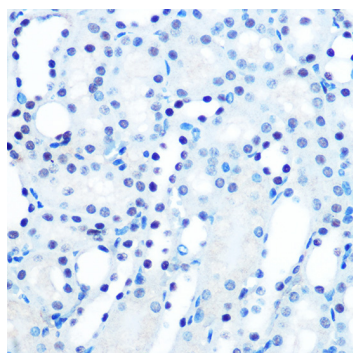
Store at -20°C. Avoid freeze / thaw cycles.

Buffer: PBS with 0.02% sodium azide, 0.05% BSA, 50% glycerol, pH 7.3.

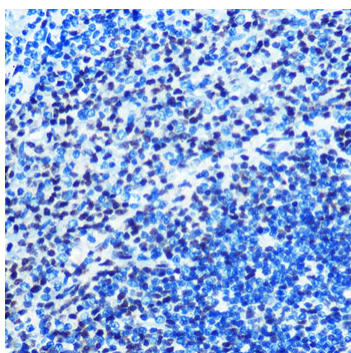
Validation Data



Western blot analysis of extracts of various cell lines, using MAD2/MAD2/MAD2L1 Rabbit mAb (A11469) at 1:10000 dilution.
Secondary antibody: HRP Goat Anti-Rabbit IgG (H+L) (AS014) at 1:10000 dilution.
Lysates/proteins: 25µg per lane.
Blocking buffer: 3% nonfat dry milk in TBST.
Detection: ECL Basic Kit (RM00020).
Exposure time: 3min.



Immunohistochemistry analysis of paraffin-embedded mouse kidney using MAD2/MAD2/MAD2L1 Rabbit mAb (A11469) at dilution of 1:100 (40x lens). Perform microwave antigen retrieval with 10 mM PBS buffer pH 7.2 before commencing with IHC staining protocol.



Immunohistochemistry analysis of paraffin-embedded rat spleen using MAD2/MAD2/MAD2L1 Rabbit mAb (A11469) at dilution of 1:100 (40x lens). Perform microwave antigen retrieval with 10 mM PBS buffer pH 7.2 before commencing with IHC staining protocol.