

# LDHA Rabbit pAb

Catalog No.: A1146 **18 Publications**

## Basic Information

**Observed MW**

37kDa

**Calculated MW**

37kDa

**Category**

Primary antibody

**Applications**

ELISA, WB, IHC-P, IF/ICC, IP

**Cross-Reactivity**

Human, Mouse, Rat

## Background

The protein encoded by this gene catalyzes the conversion of L-lactate and NAD to pyruvate and NADH in the final step of anaerobic glycolysis. The protein is found predominantly in muscle tissue and belongs to the lactate dehydrogenase family. Mutations in this gene have been linked to exertional myoglobinuria. Multiple transcript variants encoding different isoforms have been found for this gene. The human genome contains several non-transcribed pseudogenes of this gene.

## Recommended Dilutions

<b>WB</b>	1:500 - 1:2000
<b>IHC-P</b>	1:50 - 1:200
<b>IF/ICC</b>	1:50 - 1:200
<b>IP</b>	0.5ug-4ug antibody for 200ug-400ug extracts of whole cells

## Immunogen Information

<b>Gene ID</b>	<b>Swiss Prot</b>
3939	P00338

**Immunogen**

Recombinant fusion protein containing a sequence corresponding to amino acids 1-332 of human LDHA (NP\_005557.1).

**Synonyms**

LDHM; GSD11; PIG19; HEL-S-133P; LDHA

## Contact

 | [www.abclonal.com](http://www.abclonal.com)

## Product Information

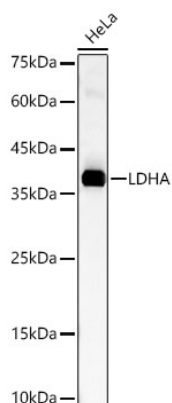
<b>Source</b>	<b>Isotype</b>	<b>Purification</b>
Rabbit	IgG	Affinity purification

**Storage**

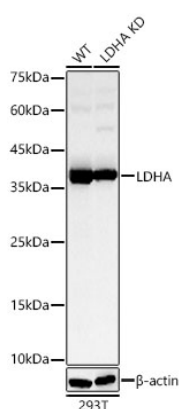
Store at -20°C. Avoid freeze / thaw cycles.

Buffer: PBS with 0.01% thimerosal, 50% glycerol, pH7.3.

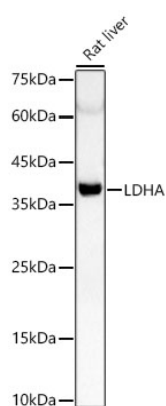
## Validation Data



Western blot analysis of lysates from HeLa cells using LDHA Rabbit pAb(A1146) at 1:800 dilution.  
Secondary antibody: HRP Goat Anti-Rabbit IgG (H+L) (AS014) at 1:10000 dilution.  
Lysates/proteins: 25 µg per lane.  
Blocking buffer: 3% nonfat dry milk in TBST.  
Detection: ECL Basic Kit (RM00020).  
Exposure time: 60s.

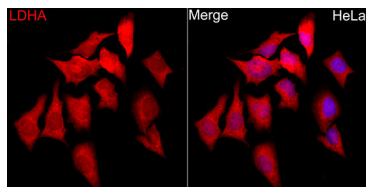


Western blot analysis of lysates from wild type (WT) and LDHA knockdown (KD) 293T cells using LDHA Rabbit pAb (A1146) at 1:800 dilution.  
Secondary antibody: HRP Goat Anti-Rabbit IgG (H+L)(AS014) at 1:10000 dilution. Lysates/proteins: 25 µg per lane.  
Blocking buffer: 3% nonfat dry milk in TBST.  
Detection: ECL Basic Kit (RM00020).  
Exposure time: 60s.

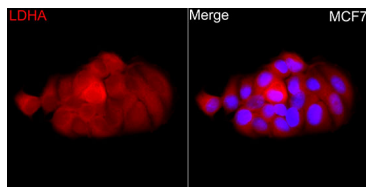


Western blot analysis of lysates from Rat liver using LDHA Rabbit pAb(A1146) at 1:800 dilution.  
Secondary antibody: HRP Goat Anti-Rabbit IgG (H+L) (AS014) at 1:10000 dilution.  
Lysates/proteins: 25 µg per lane.  
Blocking buffer: 3% nonfat dry milk in TBST.  
Detection: ECL Basic Kit (RM00020).  
Exposure time: 180s.

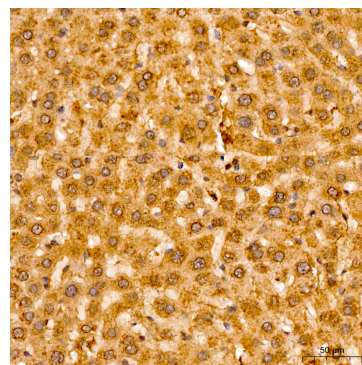
## Validation Data



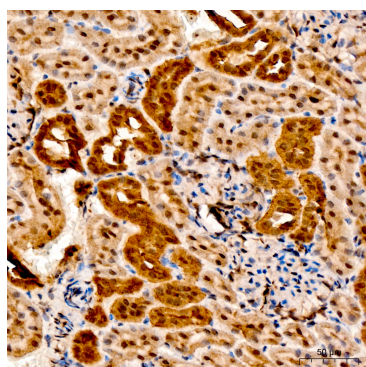
Immunofluorescence analysis of HeLa cells using LDHA Rabbit pAb (A1146) at dilution of 1:50 (40x lens). Secondary antibody: Cy3 Goat Anti-Rabbit IgG (H+L) (AS007) at 1:500 dilution. Blue: DAPI for nuclear staining.



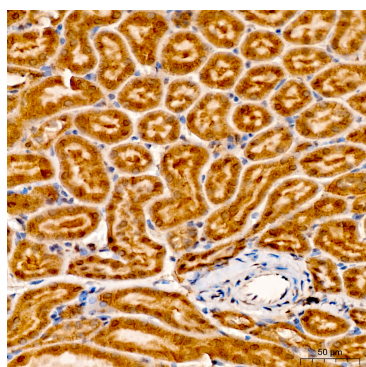
Immunofluorescence analysis of MCF7 cells using LDHA Rabbit pAb (A1146) at dilution of 1:50 (40x lens). Secondary antibody: Cy3 Goat Anti-Rabbit IgG (H+L) (AS007) at 1:500 dilution. Blue: DAPI for nuclear staining.



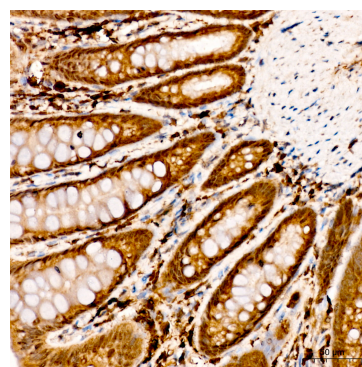
Immunohistochemistry analysis of LDHA in paraffin-embedded rat liver tissue using LDHA Rabbit pAb (A1146) at a dilution of 1:100 (40x lens). High pressure antigen retrieval was performed with 0.01 M citrate buffer (pH 6.0) prior to IHC staining.



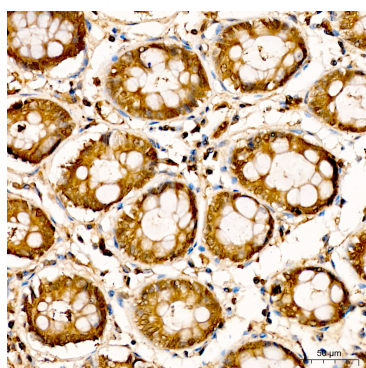
Immunohistochemistry analysis of LDHA in paraffin-embedded rat kidney tissue using LDHA Rabbit pAb (A1146) at a dilution of 1:100 (40x lens). High pressure antigen retrieval was performed with 0.01 M citrate buffer (pH 6.0) prior to IHC staining.



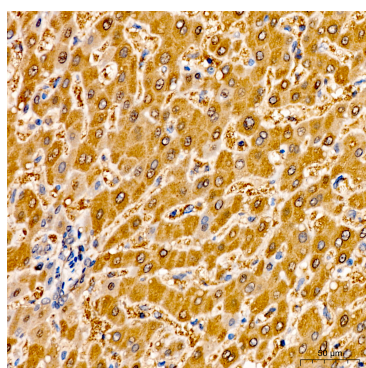
Immunohistochemistry analysis of LDHA in paraffin-embedded mouse kidney tissue using LDHA Rabbit pAb (A1146) at a dilution of 1:100 (40x lens). High pressure antigen retrieval was performed with 0.01 M citrate buffer (pH 6.0) prior to IHC staining.



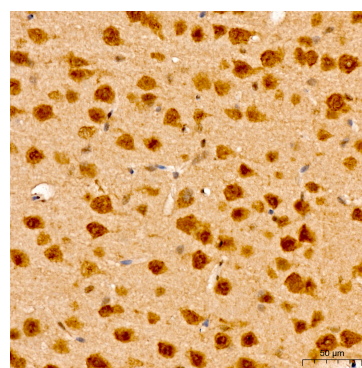
Immunohistochemistry analysis of LDHA in paraffin-embedded rat large intestine tissue using LDHA Rabbit pAb (A1146) at a dilution of 1:100 (40x lens). High pressure antigen retrieval was performed with 0.01 M citrate buffer (pH 6.0) prior to IHC staining.



Immunohistochemistry analysis of LDHA in paraffin-embedded human colon tissue using LDHA Rabbit pAb (A1146) at a dilution of 1:100 (40x lens). High pressure antigen retrieval was performed with 0.01 M citrate buffer (pH 6.0) prior to IHC staining.



Immunohistochemistry analysis of LDHA in paraffin-embedded human liver tissue using LDHA Rabbit pAb (A1146) at a dilution of 1:100 (40x lens). High pressure antigen retrieval was performed with 0.01 M citrate buffer (pH 6.0) prior to IHC staining.



Immunohistochemistry analysis of LDHA in paraffin-embedded mouse brain tissue using LDHA Rabbit pAb (A1146) at a dilution of 1:100 (40x lens). High pressure antigen retrieval was performed with 0.01 M citrate buffer (pH 6.0) prior to IHC staining.