

A11438

Leader in Biomolecular Solutions for Life Science



## MAP1LC3A Rabbit pAb

Catalog No.: A11438

5 Publications

### Basic Information

#### Observed MW

18kDa

#### Calculated MW

14kDa

#### Category

Mouse Monoclonal Antibody

#### Applications

WB, IHC-P, ELISA

#### Cross-Reactivity

Mouse, Rat

### Background

MAP1A and MAP1B are microtubule-associated proteins which mediate the physical interactions between microtubules and components of the cytoskeleton. MAP1A and MAP1B each consist of a heavy chain subunit and multiple light chain subunits. The protein encoded by this gene is one of the light chain subunits and can associate with either MAP1A or MAP1B. Two transcript variants encoding different isoforms have been found for this gene. The expression of variant 1 is suppressed in many tumor cell lines, suggesting that may be involved in carcinogenesis.

### Recommended Dilutions

WB	1:500 - 1:2000
IHC-P	1:50 - 1:200

### Immunogen Information

#### Gene ID

84557

#### Swiss Prot

Q9H492

#### Immunogen

A synthetic peptide corresponding to a sequence within amino acids 1-100 of human MAP1LC3A (NP\_115903.1).

#### Synonyms

LC3; LC3A; ATG8E; MAP1ALC3; MAP1BLC3; MAP1LC3A

### Contact



[www.abclonal.com](http://www.abclonal.com)

### Product Information

#### Source

Rabbit

#### Isotype

IgG

#### Purification

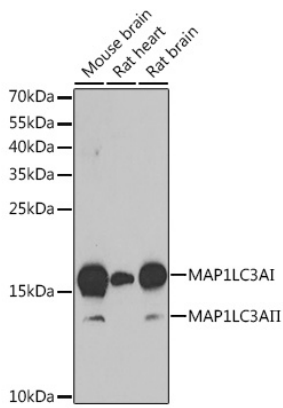
Affinity purification

#### Storage

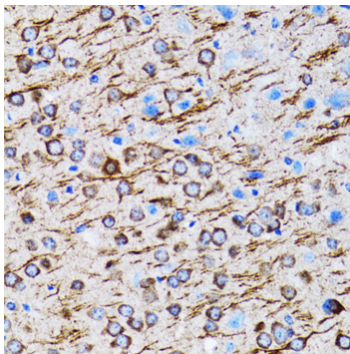
Store at -20°C. Avoid freeze / thaw cycles.

Buffer: PBS with 0.02% sodium azide, 50% glycerol, pH 7.3.

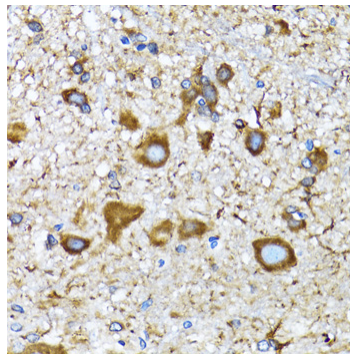
## Validation Data



Western blot analysis of extracts of various cell lines, using MAP1LC3A antibody (A11438) at 1:1000 dilution.  
Secondary antibody: HRP Goat Anti-Rabbit IgG (H+L) (AS014) at 1:10000 dilution.  
Lysates/proteins: 25µg per lane.  
Blocking buffer: 3% nonfat dry milk in TBST.  
Detection: ECL Basic Kit (RM00020).  
Exposure time: 90s.



Immunohistochemistry analysis of paraffin-embedded rat brain using MAP1LC3A antibody (A11438) at dilution of 1:100 (40x lens). Perform microwave antigen retrieval with 10 mM PBS buffer pH 7.2 before commencing with IHC staining protocol.



Immunohistochemistry analysis of paraffin-embedded mouse spinal cord using MAP1LC3A antibody (A11438) at dilution of 1:100 (40x lens). Perform microwave antigen retrieval with 10 mM PBS buffer pH 7.2 before commencing with IHC staining protocol.