

A11397

Leader in Biomolecular Solutions for Life Science



## IκBα Rabbit pAb

Catalog No.: A11397

21 Publications

### Basic Information

#### Observed MW

36kDa

#### Calculated MW

36kDa

#### Category

Mouse Monoclonal Antibody

#### Applications

WB,IP,ELISA

#### Cross-Reactivity

Human,Mouse,Rat

### Background

This gene encodes a member of the NF-kappa-B inhibitor family, which contain multiple ankrin repeat domains. The encoded protein interacts with REL dimers to inhibit NF-kappa-B/REL complexes which are involved in inflammatory responses. The encoded protein moves between the cytoplasm and the nucleus via a nuclear localization signal and CRM1-mediated nuclear export. Mutations in this gene have been found in ectodermal dysplasia anhidrotic with T-cell immunodeficiency autosomal dominant disease.

### Recommended Dilutions

WB	1:500 - 1:1000
IP	1:20 - 1:50

### Immunogen Information

#### Gene ID

4792

#### Swiss Prot

P25963

#### Immunogen

Recombinant fusion protein containing a sequence corresponding to amino acids 201-300 of human IκBα (NP\_065390.1).

#### Synonyms

IKBA; MAD-3; NFKBI; EDAID2; IκBα

### Contact



[www.abclonal.com](http://www.abclonal.com)

### Product Information

#### Source

Rabbit

#### Isotype

IgG

#### Purification

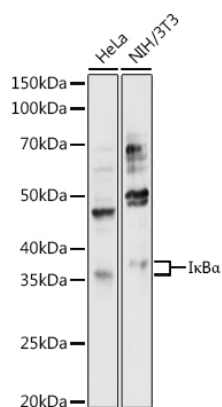
Affinity purification

#### Storage

Store at -20°C. Avoid freeze / thaw cycles.

Buffer: PBS with 0.02% sodium azide,50% glycerol,pH7.3.

## Validation Data



Western blot analysis of various lysates using IκBα Rabbit pAb (A11397) at 1:1000 dilution.  
Secondary antibody: HRP Goat Anti-Rabbit IgG (H+L) (A5014) at 1:10000 dilution.  
Lysates/proteins: 25μg per lane.  
Blocking buffer: 3% nonfat dry milk in TBST.  
Detection: ECL Enhanced Kit (RM00021).  
Exposure time: 180s.

Western blot analysis of lysates from Rat liver, using IκBα Rabbit pAb (A11397) at 1:1000 dilution.  
Secondary antibody: HRP Goat Anti-Rabbit IgG (H+L) (A5014) at 1:10000 dilution.  
Lysates/proteins: 25μg per lane.  
Blocking buffer: 3% nonfat dry milk in TBST.  
Detection: ECL Basic Kit (RM00020).  
Exposure time: 180s.

