

A11370

Leader in Biomolecular Solutions for Life Science



## IL1 $\beta$ Rabbit pAb

Catalog No.: A11370

21 Publications

### Basic Information

#### Observed MW

Refer to figures

#### Calculated MW

31kDa

#### Category

Polyclonal Antibody

#### Applications

IF/ICC,ELISA

#### Cross-Reactivity

Human

### Background

The protein encoded by this gene is a member of the interleukin 1 cytokine family. This cytokine is produced by activated macrophages as a proprotein, which is proteolytically processed to its active form by caspase 1 (CASP1/ICE). This cytokine is an important mediator of the inflammatory response, and is involved in a variety of cellular activities, including cell proliferation, differentiation, and apoptosis. The induction of cyclooxygenase-2 (PTGS2/COX2) by this cytokine in the central nervous system (CNS) is found to contribute to inflammatory pain hypersensitivity. Similarly, IL-1 $\beta$  has been implicated in human osteoarthritis pathogenesis. Patients with severe Coronavirus Disease 2019 (COVID-19) present elevated levels of pro-inflammatory cytokines such as IL-1 $\beta$  in bronchial alveolar lavage fluid samples. The lung damage induced by the Severe acute respiratory syndrome coronavirus 2 (SARS-CoV-2) is to a large extent, a result of the inflammatory response promoted by cytokines such as IL-1 $\beta$ . This gene and eight other interleukin 1 family genes form a cytokine gene cluster on chromosome 2.

### Recommended Dilutions

IF/ICC 1:50 - 1:200

### Immunogen Information

#### Gene ID

3553

#### Swiss Prot

P01584

#### Immunogen

Recombinant fusion protein containing a sequence corresponding to amino acids 1-269 of human IL1 $\beta$  (NP\_000567.1).

#### Synonyms

IL-1; IL1F2; IL1beta; IL1-BETA; IL1 $\beta$

### Contact



[www.abclonal.com](http://www.abclonal.com)

### Product Information

#### Source

Rabbit

#### Isotype

IgG

#### Purification

Affinity purification

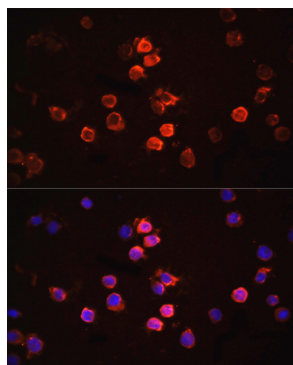
#### Storage

Store at -20°C. Avoid freeze / thaw cycles.

Buffer: PBS with 0.01% thimerosal, 50% glycerol, pH 7.3.

## Validation Data

---



Immunofluorescence analysis of THP-1 cells using IL1 $\beta$  Rabbit pAb (A11370) at dilution of 1:100. Secondary antibody: Cy3 Goat Anti-Rabbit IgG (H+L) (AS007) at 1:500 dilution. Blue: DAPI for nuclear staining.