

A11351

Leader in Biomolecular Solutions for Life Science



EGFR Rabbit pAb

Catalog No.: A11351

30 Publications

Basic Information

Observed MW

175kDa

Calculated MW

134kDa

Category

Polyclonal Antibody

Applications

WB, IHC-P, IF/ICC, IP, ELISA

Cross-Reactivity

Human, Mouse, Rat

Background

The protein encoded by this gene is a transmembrane glycoprotein that is a member of the protein kinase superfamily. This protein is a receptor for members of the epidermal growth factor family. EGFR is a cell surface protein that binds to epidermal growth factor, thus inducing receptor dimerization and tyrosine autophosphorylation leading to cell proliferation. Mutations in this gene are associated with lung cancer. EGFR is a component of the cytokine storm which contributes to a severe form of Coronavirus Disease 2019 (COVID-19) resulting from infection with severe acute respiratory syndrome coronavirus-2 (SARS-CoV-2).

Recommended Dilutions

WB	1:1000 - 1:5000
IHC-P	1:50 - 1:200
IF/ICC	1:100 - 1:500
IP	0.5µg-4µg antibody for 200µg-400µg extracts of whole cells

Immunogen Information

Gene ID

1956

Swiss Prot

P00533

Immunogen

Recombinant fusion protein containing a sequence corresponding to amino acids 1021-1210 of human EGFR (NP_005219.2).

Synonyms

ERBB; ERBP; HER1; mENA; ERBB1; PIG61; NISBD2; EGFR

Contact



www.abclonal.com

Product Information

Source

Rabbit

Isotype

IgG

Purification

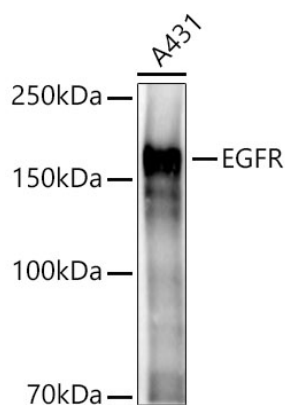
Affinity purification

Storage

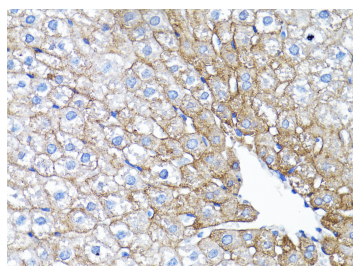
Store at -20°C. Avoid freeze / thaw cycles.

Buffer: PBS with 0.01% thimerosal, 50% glycerol, pH7.3.

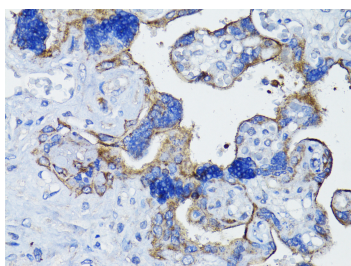
Validation Data



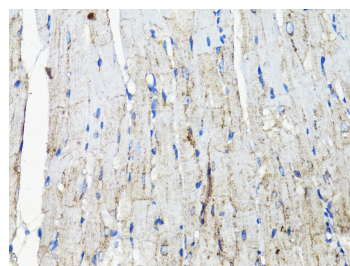
Western blot analysis of lysates from A431 cells, using EGFR Rabbit pAb (A11351) at 1:2000 dilution.
Secondary antibody: HRP Goat Anti-Rabbit IgG (H+L) (AS014) at 1:10000 dilution.
Lysates/proteins: 25ug per lane.
Blocking buffer: 3% nonfat dry milk in TBST.
Detection: ECL Basic Kit (RM00020).
Exposure time: 3s.



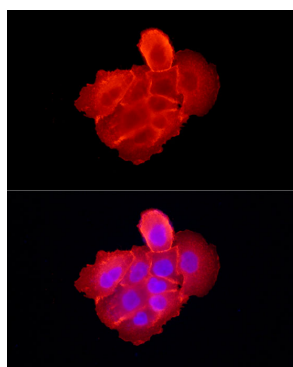
Immunohistochemistry analysis of EGFR in paraffin-embedded Rat liver using EGFR Rabbit pAb (A11351) at dilution of 1:200 (40x lens). Perform microwave antigen retrieval with 10 mM PBS buffer pH 7.2 before commencing with IHC staining protocol.



Immunohistochemistry analysis of EGFR in paraffin-embedded Human placenta using EGFR Rabbit pAb (A11351) at dilution of 1:200 (40x lens). Perform microwave antigen retrieval with 10 mM PBS buffer pH 7.2 before commencing with IHC staining protocol.

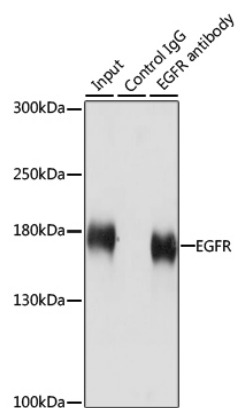


Immunohistochemistry analysis of EGFR in paraffin-embedded Mouse heart using EGFR Rabbit pAb (A11351) at dilution of 1:200 (40x lens). Perform microwave antigen retrieval with 10 mM PBS buffer pH 7.2 before commencing with IHC staining protocol.



Immunofluorescence analysis of A-431 cells using EGFR Rabbit pAb (A11351) at dilution of 1:300 (40x lens). Secondary antibody: Cy3 Goat Anti-Rabbit IgG (H+L) (AS007) at 1:500 dilution. Blue: DAPI for nuclear staining.

Validation Data



Immunoprecipitation analysis of 200 µg extracts of HeLa cells using 3 µg EGFR antibody (A11351). Western blot was performed from the immunoprecipitate using EGFR antibody (A11351) at a dilution of 1:1000.