

A1135

Leader in Biomolecular Solutions for Life Science



## E2F8 Rabbit pAb

Catalog No.: A1135

6 Publications

### Basic Information

#### Observed MW

105kDa

#### Calculated MW

94kDa

#### Category

Polyclonal Antibody

#### Applications

WB, ELISA

#### Cross-Reactivity

Human, Mouse

### Background

This gene encodes a member of a family of transcription factors which regulate the expression of genes required for progression through the cell cycle. The encoded protein regulates progression from G1 to S phase by ensuring the nucleus divides at the proper time. Multiple alternatively spliced variants, encoding the same protein, have been identified.

### Recommended Dilutions

WB 1:500 - 1:2000

### Immunogen Information

#### Gene ID

79733

#### Swiss Prot

A0AVK6

#### Immunogen

Recombinant fusion protein containing a sequence corresponding to amino acids 788-867 of human E2F8 (NP\_078956.2).

#### Synonyms

E2F-8; E2F8

### Contact



[www.abclonal.com](http://www.abclonal.com)

### Product Information

#### Source

Rabbit

#### Isotype

IgG

#### Purification

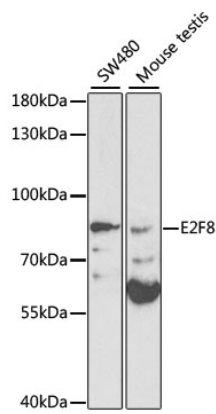
Affinity purification

#### Storage

Store at -20°C. Avoid freeze / thaw cycles.

Buffer: PBS with 0.01% thimerosal, 50% glycerol, pH 7.3.

Validation Data



Western blot analysis of various lysates using E2F8 Rabbit pAb (A1135) at 1:1000 dilution. Secondary antibody: HRP Goat Anti-Rabbit IgG (H+L) (AS014) at 1:10000 dilution. Lysates/proteins: 25µg per lane. Blocking buffer: 3% nonfat dry milk in TBST. Detection: ECL Basic Kit (RM00020).