

A11328

Leader in Biomolecular Solutions for Life Science



## CDC25C Rabbit pAb

Catalog No.: A11328

### Basic Information

#### Observed MW

Refer to figures

#### Calculated MW

53kDa

#### Category

Polyclonal Antibody

#### Applications

IF/ICC,ELISA

#### Cross-Reactivity

Human

### Background

This gene encodes a conserved protein that plays a key role in the regulation of cell division. The encoded protein directs dephosphorylation of cyclin B-bound CDC2 and triggers entry into mitosis. It also suppresses p53-induced growth arrest. Multiple alternatively spliced transcript variants of this gene have been described.

### Recommended Dilutions

IF/ICC 1:50 - 1:200

### Immunogen Information

#### Gene ID

995

#### Swiss Prot

P30307

#### Immunogen

Recombinant fusion protein containing a sequence corresponding to amino acids 174-473 of human CDC25C (NP\_001781.2).

#### Synonyms

CDC25; PPP1R60; CDC25C

### Contact



[www.abclonal.com](http://www.abclonal.com)

### Product Information

#### Source

Rabbit

#### Isotype

IgG

#### Purification

Affinity purification

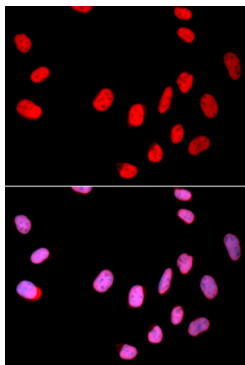
#### Storage

Store at -20°C. Avoid freeze / thaw cycles.

Buffer: PBS with 0.02% sodium azide, 50% glycerol, pH7.3.

## Validation Data

---



Immunofluorescence analysis of U2OS cells using CDC25C antibody (A11328). Blue: DAPI for nuclear staining.