

A1132

Leader in Biomolecular Solutions for Life Science



## Emerin/EMD Rabbit pAb

Catalog No.: A1132

### Basic Information

#### Observed MW

35kDa

#### Calculated MW

29kDa

#### Category

Mouse Monoclonal Antibody

#### Applications

WB, IHC-P, IF/ICC, ELISA

#### Cross-Reactivity

Human

### Background

Emerin is a serine-rich nuclear membrane protein and a member of the nuclear lamina-associated protein family. It mediates membrane anchorage to the cytoskeleton. Dreifuss-Emery muscular dystrophy is an X-linked inherited degenerative myopathy resulting from mutation in the emerin gene.

### Recommended Dilutions

WB	1:500 - 1:2000
IHC-P	1:50 - 1:200
IF/ICC	1:20 - 1:100

### Immunogen Information

#### Gene ID

2010

#### Swiss Prot

P50402

#### Immunogen

Recombinant fusion protein containing a sequence corresponding to amino acids 1-220 of human Emerin/Emerin/EMD (NP\_000108.1).

#### Synonyms

STA; EDMD; LEMD5; Emerin/EMD

### Contact



[www.abclonal.com](http://www.abclonal.com)

### Product Information

#### Source

Rabbit

#### Isotype

IgG

#### Purification

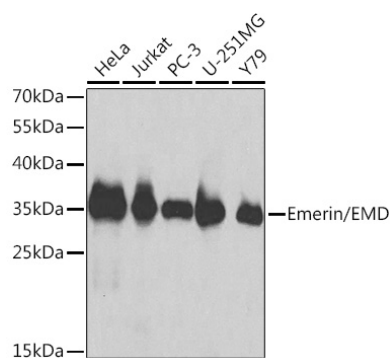
Affinity purification

#### Storage

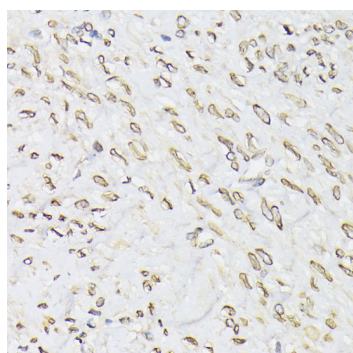
Store at -20°C. Avoid freeze / thaw cycles.

Buffer: PBS with 0.02% sodium azide, 50% glycerol, pH 7.3.

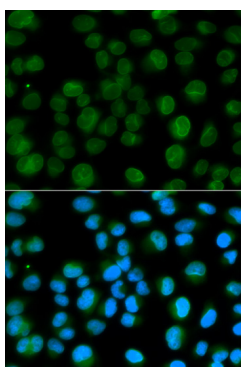
## Validation Data



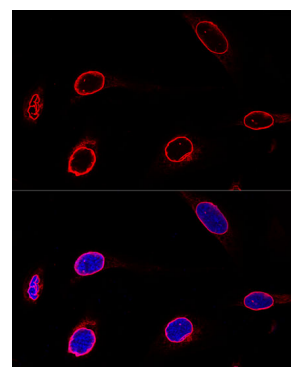
Western blot analysis of various lysates using Emerin/EMD Rabbit pAb (A1132) at 1:1000 dilution.  
Secondary antibody: HRP Goat Anti-Rabbit IgG (H+L) (AS014) at 1:10000 dilution.  
Lysates/proteins: 25µg per lane.  
Blocking buffer: 3% nonfat dry milk in TBST.



Immunohistochemistry analysis of Emerin/EMD in paraffin-embedded human uterus using Emerin/EMD Rabbit pAb (A1132) at dilution of 1:100 (40x lens). Perform microwave antigen retrieval with 10 mM PBS buffer pH 7.2 before commencing with IHC staining protocol.



Immunofluorescence analysis of HeLa cells using Emerin/EMD Rabbit pAb (A1132).  
Secondary antibody: Cy3 Goat Anti-Rabbit IgG (H+L) (AS007) at 1:500 dilution. Blue: DAPI for nuclear staining.



Confocal immunofluorescence analysis of U-2 OS cells using Emerin/EMD Rabbit pAb (A1132) at dilution of 1:100. Blue: DAPI for nuclear staining.