

A1126

Leader in Biomolecular Solutions for Life Science



Cardiac troponin T (TNNT2) Rabbit pAb

Catalog No.: A1126

4 Publications

Basic Information

Observed MW

42kDa

Calculated MW

36kDa

Category

Mouse Monoclonal Antibody

Applications

WB, IHC-P, IF/ICC, ELISA

Cross-Reactivity

Mouse, Rat

Background

This gene encodes the cardiac isoform of troponin T. The encoded protein is the tropomyosin-binding subunit of the troponin complex, which is located on the thin filament of striated muscles and regulates muscle contraction in response to alterations in intracellular calcium ion concentration. Mutations in this gene have been associated with familial hypertrophic cardiomyopathy as well as with dilated cardiomyopathy.

Recommended Dilutions

WB	1:1000 - 1:5000
IHC-P	1:100 - 1:200
IF/ICC	1:50 - 1:200

Immunogen Information

Gene ID

7139

Swiss Prot

P45379

Immunogen

Recombinant fusion protein containing a sequence corresponding to amino acids 1-120 of human Cardiac troponin T (Cardiac troponin T (TNNT2)) (NP_001001431.1).

Synonyms

CMH2; RCM3; TnTC; cTnT; CMD1D; CMPD2; LVNC6; Cardiac troponin T (TNNT2)

Contact



www.abclonal.com

Product Information

Source

Rabbit

Isotype

IgG

Purification

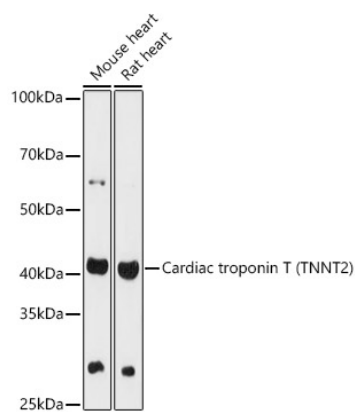
Affinity purification

Storage

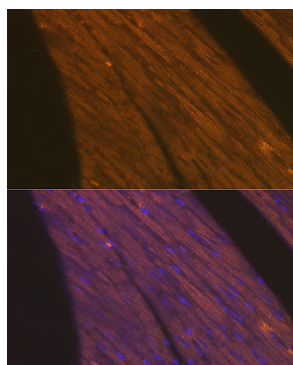
Store at -20°C. Avoid freeze / thaw cycles.

Buffer: PBS with 0.02% sodium azide, 50% glycerol, pH 7.3.

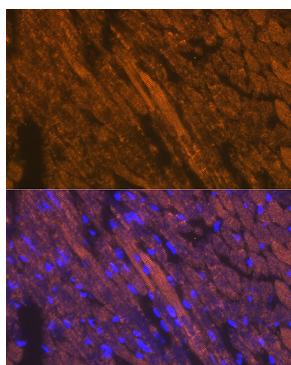
Validation Data



Western blot analysis of extracts of various cell lines, using Cardiac troponin T (TNNT2) antibody (A1126) at 1:1000 dilution.
Secondary antibody: HRP Goat Anti-Rabbit IgG (H+L) (AS014) at 1:10000 dilution.
Lysates/proteins: 25µg per lane.
Blocking buffer: 3% nonfat dry milk in TBST.
Detection: ECL Basic Kit (RM00020).
Exposure time: 90s.



Immunofluorescence analysis of rat heart cells using Cardiac troponin T (TNNT2) Rabbit pAb (A1126) at dilution of 1:100 (40x lens). Blue: DAPI for nuclear staining.



Immunofluorescence analysis of mouse heart cells using Cardiac troponin T (TNNT2) Rabbit pAb (A1126) at dilution of 1:100 (40x lens). Blue: DAPI for nuclear staining.