

A11159

Leader in Biomolecular Solutions for Life Science



NRF2 Rabbit pAb

Catalog No.: A11159

14 Publications

Basic Information

Observed MW

97-100kDa

Calculated MW

68kDa

Category

Polyclonal Antibody

Applications

WB, IHC-P, IF/ICC, ELISA

Cross-Reactivity

Human, Mouse, Rat

Background

This gene encodes a transcription factor which is a member of a small family of basic leucine zipper (bZIP) proteins. The encoded transcription factor regulates genes which contain antioxidant response elements (ARE) in their promoters; many of these genes encode proteins involved in response to injury and inflammation which includes the production of free radicals. Multiple transcript variants encoding different isoforms have been characterized for this gene.

Recommended Dilutions

WB	1:500 - 1:1000
IHC-P	1:50 - 1:200
IF/ICC	1:50 - 1:200

Immunogen Information

Gene ID

4780

Swiss Prot

Q16236

Immunogen

Recombinant fusion protein containing a sequence corresponding to amino acids 366-605 of human NRF2 (NP_006155.2).

Synonyms

NRF2; HEBP1; Nrf-2; IMDDHH

Contact



www.abclonal.com

Product Information

Source

Rabbit

Isotype

IgG

Purification

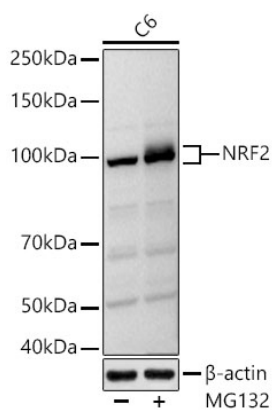
Affinity purification

Storage

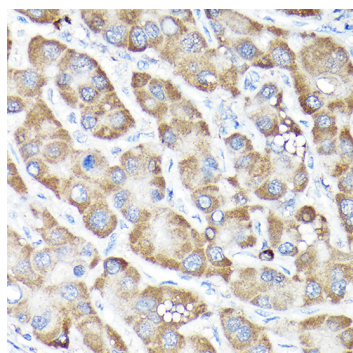
Store at -20°C. Avoid freeze / thaw cycles.

Buffer: PBS with 0.01% thimerosal, 50% glycerol, pH 7.3.

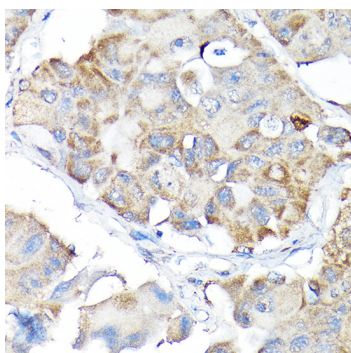
Validation Data



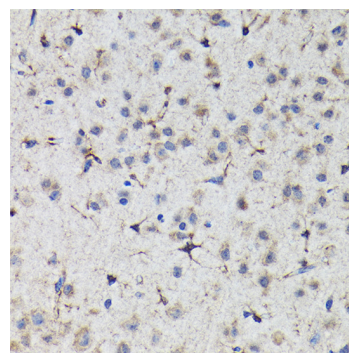
Western blot analysis of lysates from C6 cells, using NRF2 Rabbit pAb (A11159) at 1:1000 dilution. C6 cells were treated by MG132 (50 μ M) at 37°C for 90 minutes.
 Secondary antibody: HRP Goat Anti-Rabbit IgG (H+L) (AS014) at 1:10000 dilution.
 Lysates/proteins: 25 μ g per lane.
 Blocking buffer: 3% nonfat dry milk in TBST.
 Detection: ECL Basic Kit (RM00020).
 Exposure time: 3s.



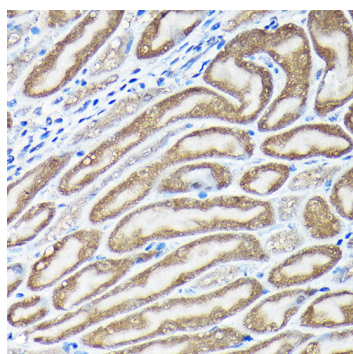
Immunohistochemistry analysis of NRF2 in paraffin-embedded human liver cancer using NRF2 Rabbit pAb (A11159) at dilution of 1:200 (40x lens). Perform high pressure antigen retrieval with 10 mM citrate buffer pH 6.0 before commencing with IHC staining protocol.



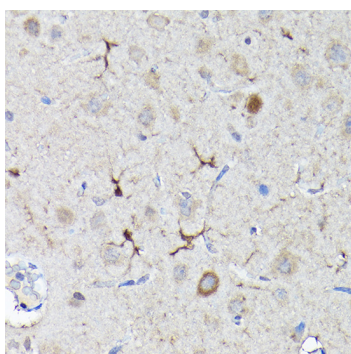
Immunohistochemistry analysis of NRF2 in paraffin-embedded human lung cancer using NRF2 Rabbit pAb (A11159) at dilution of 1:200 (40x lens). Perform high pressure antigen retrieval with 10 mM citrate buffer pH 6.0 before commencing with IHC staining protocol.



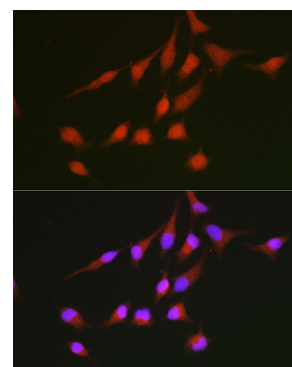
Immunohistochemistry analysis of NRF2 in paraffin-embedded mouse brain using NRF2 Rabbit pAb (A11159) at dilution of 1:200 (40x lens). Perform high pressure antigen retrieval with 10 mM citrate buffer pH 6.0 before commencing with IHC staining protocol.



Immunohistochemistry analysis of NRF2 in paraffin-embedded mouse kidney using NRF2 Rabbit pAb (A11159) at dilution of 1:200 (40x lens). Perform high pressure antigen retrieval with 10 mM citrate buffer pH 6.0 before commencing with IHC staining protocol.



Immunohistochemistry analysis of NRF2 in paraffin-embedded rat brain using NRF2 Rabbit pAb (A11159) at dilution of 1:200 (40x lens). Perform high pressure antigen retrieval with 10 mM citrate buffer pH 6.0 before commencing with IHC staining protocol.



Immunofluorescence analysis of HeLa cells using NRF2 Rabbit pAb (A11159) at dilution of 1:100 (40x lens). Secondary antibody: Cy3 Goat Anti-Rabbit IgG (H+L) (AS007) at 1:500 dilution. Blue: DAPI for nuclear staining.