

## [KO Validated] IRF3 Polyclonal Antibody

<b>Catalog No.</b>	A11118	<b>Category</b>	Polyclonal Antibodies
<b>Applications</b>	WB, IHC, IF, ChIP	<b>Observed MW</b>	56kDa
<b>Cross-reactivity</b>	Human	<b>Calculated MW</b>	12kDa/16kDa/33kDa/47kDa/49kDa

### Immunogen Information

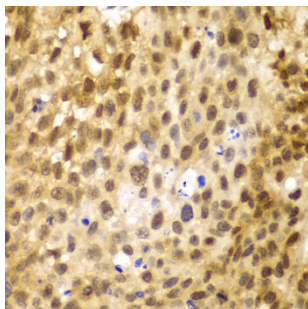
<b>Immunogen</b>	Recombinant fusion protein containing a sequence corresponding to amino acids 1-260 of human IRF3 (NP_001184051.1).
<b>Gene ID</b>	3661
<b>Swiss prot</b>	Q14653
<b>Synonyms</b>	IRF3; IAE7; interferon regulatory factor 3

### Product information

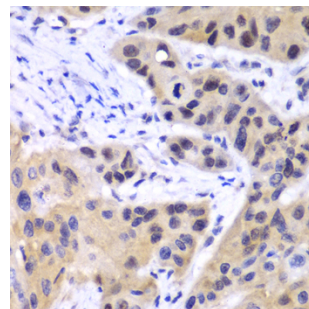
<b>Source</b>	Rabbit
<b>Isotype</b>	IgG
<b>Purification method</b>	Affinity purification
<b>Storage</b>	Store at -20°C. Avoid freeze / thaw cycles. Buffer: PBS with 0.02% sodium azide, 50% glycerol, pH7.3.

### Background

This gene encodes a member of the interferon regulatory transcription factor (IRF) family. The encoded protein is found in an inactive cytoplasmic form that upon serine/threonine phosphorylation forms a complex with CREBBP. This complex translocates to the nucleus and activates the transcription of interferons alpha and beta, as well as other interferon-induced genes. Alternatively spliced transcript variants encoding multiple isoforms have been observed for this gene.



Immunohistochemistry - [KO Validated] IRF3 Polyclonal Antibody (A11118)



Immunohistochemistry - [KO Validated] IRF3 Polyclonal Antibody (A11118)

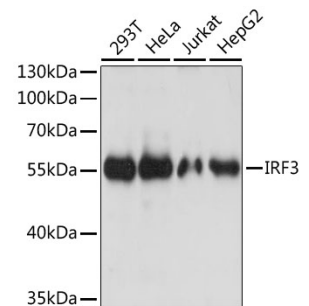
### Recommended Dilutions

WB 1:500 -  
1:2000

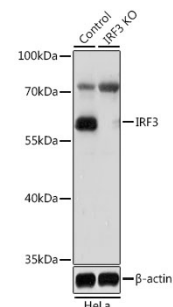
IHC 1:50 -  
1:200

IF 1:50 -  
1:200

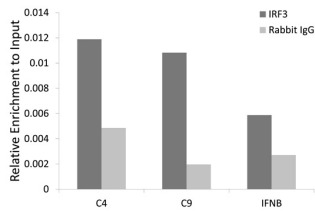
ChIP 1:20 -  
1:100



Western blot - [KO Validated] IRF3 Polyclonal Antibody (A11118)



Western blot - [KO Validated] IRF3 Polyclonal Antibody (A11118)



Chromatin Immunoprecipitation - [KO Validated] IRF3 Polyclonal Antibody (A11118)