

A1111

Leader in Biomolecular Solutions for Life Science



## CYR61 Rabbit pAb

Catalog No.: A1111

10 Publications

### Basic Information

#### Observed MW

41kDa

#### Calculated MW

42kDa

#### Category

Polyclonal Antibody

#### Applications

WB, IF/ICC, ELISA

#### Cross-Reactivity

Human, Mouse, Rat

### Background

The secreted protein encoded by this gene is growth factor-inducible and promotes the adhesion of endothelial cells. The encoded protein interacts with several integrins and with heparan sulfate proteoglycan. This protein also plays a role in cell proliferation, differentiation, angiogenesis, apoptosis, and extracellular matrix formation.

### Recommended Dilutions

WB 1:500 - 1:1000

IF/ICC 1:50 - 1:200

### Immunogen Information

#### Gene ID

3491

#### Swiss Prot

O00622

#### Immunogen

A synthetic peptide corresponding to a sequence within amino acids 120-220 of human CYR61 (NP\_001545.2).

#### Synonyms

GIG1; CYR61; IGFBP10

### Contact



[www.abclonal.com](http://www.abclonal.com)

### Product Information

#### Source

Rabbit

#### Isotype

IgG

#### Purification

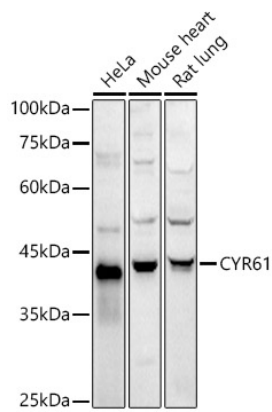
Affinity purification

#### Storage

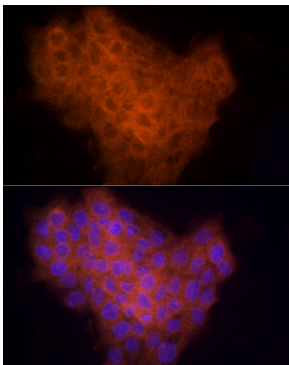
Store at -20°C. Avoid freeze / thaw cycles.

Buffer: PBS with 0.05% proclin300, 50% glycerol, pH7.3.

## Validation Data



Western blot analysis of extracts of various cell lines, using CYR61 antibody (A1111) at 1:1000 dilution.  
Secondary antibody: HRP Goat Anti-Rabbit IgG (H+L) (AS014) at 1:10000 dilution.  
Lysates/proteins: 25µg per lane.  
Blocking buffer: 3% nonfat dry milk in TBST.  
Detection: ECL Basic Kit (RM00020).  
Exposure time: 30s.



Immunofluorescence analysis of A431 cells using CYR61 Rabbit pAb (A1111) at dilution of 1:200 (40x lens). Blue: DAPI for nuclear staining.