

A11109

Leader in Biomolecular Solutions for Life Science



IGFBP1 Rabbit pAb

Catalog No.: A11109

2 Publications

Basic Information

Observed MW

30kDa

Calculated MW

28kDa

Category

Polyclonal Antibody

Applications

WB, ELISA

Cross-Reactivity

Human

Background

This gene is a member of the insulin-like growth factor binding protein (IGFBP) family and encodes a protein with an IGFBP N-terminal domain and a thyroglobulin type-I domain. The encoded protein, mainly expressed in the liver, circulates in the plasma and binds both insulin-like growth factors (IGFs) I and II, prolonging their half-lives and altering their interaction with cell surface receptors. This protein is important in cell migration and metabolism. Low levels of this protein may be associated with impaired glucose tolerance, vascular disease and hypertension in human patients.

Recommended Dilutions

WB 1:500 - 1:1000

Immunogen Information

Gene ID

3484

Swiss Prot

P08833

Immunogen

Recombinant fusion protein containing a sequence corresponding to amino acids 150-250 of human IGFBP1 (NP_000587.1).

Synonyms

AFBP; IBP1; PP12; IGF-BP25; hIGFBP-1; IGFBP1

Contact



www.abclonal.com

Product Information

Source

Rabbit

Isotype

IgG

Purification

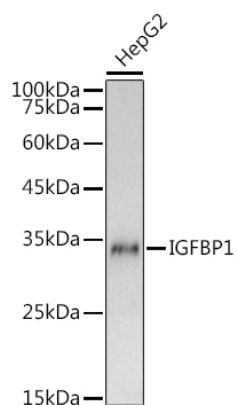
Affinity purification

Storage

Store at -20°C. Avoid freeze / thaw cycles.

Buffer: PBS with 0.05% proclin300, 50% glycerol, pH7.3.

Validation Data



Western blot analysis of extracts of HepG2 cells, using IGFBP1 antibody (A11109) at 1:1000 dilution.
Secondary antibody: HRP Goat Anti-Rabbit IgG (H+L) (AS014) at 1:10000 dilution.
Lysates/proteins: 25µg per lane.
Blocking buffer: 3% nonfat dry milk in TBST.
Detection: ECL Basic Kit (RM00020).
Exposure time: 3s.