

A11107

Leader in Biomolecular Solutions for Life Science



## PKC alpha Rabbit mAb

Catalog No.: A11107

Recombinant

5 Publications

### Basic Information

#### Observed MW

76kDa

#### Calculated MW

77kDa

#### Category

SMab Recombinant Monoclonal Antibody

#### Applications

WB, IHC-P, IP, ELISA

#### Cross-Reactivity

Human, Mouse, Rat

#### CloneNo number

ARC0197

### Background

Protein kinase C (PKC) is a family of serine- and threonine-specific protein kinases that can be activated by calcium and the second messenger diacylglycerol. PKC family members phosphorylate a wide variety of protein targets and are known to be involved in diverse cellular signaling pathways. PKC family members also serve as major receptors for phorbol esters, a class of tumor promoters. Each member of the PKC family has a specific expression profile and is believed to play a distinct role in cells. The protein encoded by this gene is one of the PKC family members. This kinase has been reported to play roles in many different cellular processes, such as cell adhesion, cell transformation, cell cycle checkpoint, and cell volume control. Knockout studies in mice suggest that this kinase may be a fundamental regulator of cardiac contractility and Ca(2+) handling in myocytes.

### Recommended Dilutions

WB 1:500 - 1:1000

IHC-P 1:50 - 1:200

IP 0.5µg-4µg antibody for  
200µg-400µg extracts of  
whole cells

### Immunogen Information

#### Gene ID

5578

#### Swiss Prot

P17252

#### Immunogen

A synthetic peptide corresponding to a sequence within amino acids 573-672 of human PKC alpha (P17252).

#### Synonyms

AAG6; PKCA; PRKACA; PKCI+/-; PKCalpha; PKC-alpha; PKC alpha

### Contact



[www.abclonal.com](http://www.abclonal.com)

### Product Information

#### Source

Rabbit

#### Isotype

IgG

#### Purification

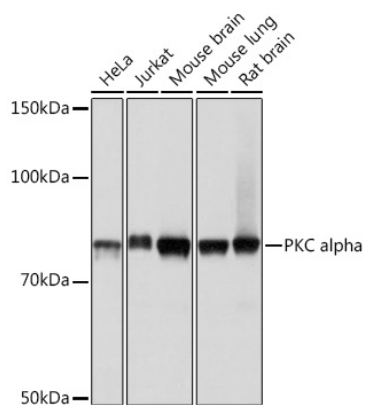
Affinity purification

#### Storage

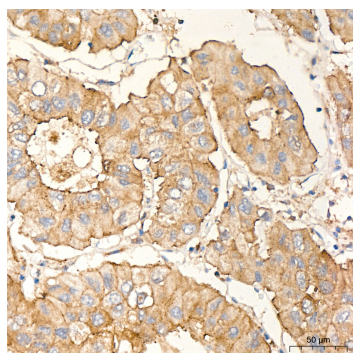
Store at -20°C. Avoid freeze / thaw cycles.

Buffer: PBS with 0.02% sodium azide, 0.05% BSA, 50% glycerol, pH7.3.

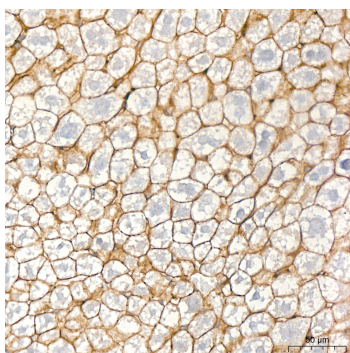
## Validation Data



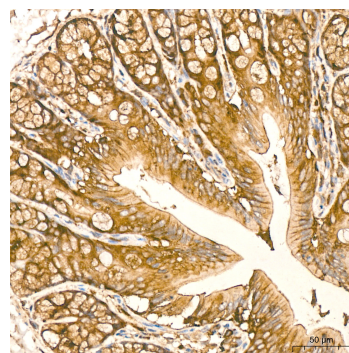
Western blot analysis of various lysates using PKC alpha pAb (A11107) at 1:1000 dilution.  
 Secondary antibody: HRP Goat Anti-Rabbit IgG (H+L) (A5014) at 1:10000 dilution.  
 Lysates/proteins: 25µg per lane.  
 Blocking buffer: 3% nonfat dry milk in TBST.  
 Detection: ECL Basic Kit (RM00020).  
 Exposure time: 1s.



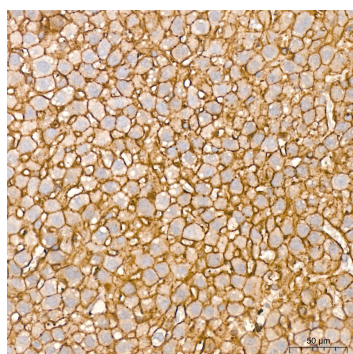
Immunohistochemistry analysis of PKC alpha in paraffin-embedded human liver cancer tissue using PKC alpha Rabbit mAb (A11107) at a dilution of 1:200 (40x lens). High pressure antigen retrieval was performed with 0.01 M citrate buffer (pH 6.0) prior to IHC staining.



Immunohistochemistry analysis of PKC alpha in paraffin-embedded mouse liver tissue using PKC alpha Rabbit mAb (A11107) at a dilution of 1:200 (40x lens). High pressure antigen retrieval was performed with 0.01 M citrate buffer (pH 6.0) prior to IHC staining.



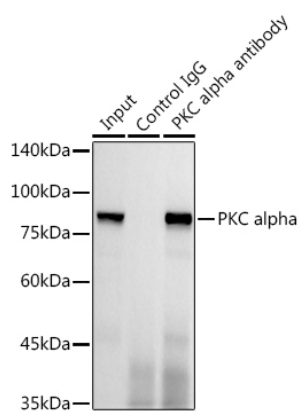
Immunohistochemistry analysis of PKC alpha in paraffin-embedded rat colon tissue using PKC alpha Rabbit mAb (A11107) at a dilution of 1:200 (40x lens). High pressure antigen retrieval was performed with 0.01 M citrate buffer (pH 6.0) prior to IHC staining.



Immunohistochemistry analysis of PKC alpha in paraffin-embedded rat liver tissue using PKC alpha Rabbit mAb (A11107) at a dilution of 1:200 (40x lens). High pressure antigen retrieval was performed with 0.01 M citrate buffer (pH 6.0) prior to IHC staining.

## Validation Data

---



Immunoprecipitation analysis of 300 µg extracts of HeLa cells using 3 µg PKC alpha antibody (A11107). Western blot was performed from the immunoprecipitate using PKC alpha antibody (A11107) at a dilution of 1:1000.