

A11040

Leader in Biomolecular Solutions for Life Science



[KO Validated] Caspase-3 Rabbit pAb

Catalog No.: A11040

KO Validated

3 Publications

Basic Information

Observed MW

32kDa/17kDa

Calculated MW

32kDa

Category

Polyclonal Antibody

Applications

WB, IF/ICC, ELISA

Cross-Reactivity

Human, Mouse, Rat

Background

The protein encoded by this gene is a cysteine-aspartic acid protease that plays a central role in the execution-phase of cell apoptosis. The encoded protein cleaves and inactivates poly(ADP-ribose) polymerase while it cleaves and activates sterol regulatory element binding proteins as well as caspases 6, 7, and 9. This protein itself is processed by caspases 8, 9, and 10. It is the predominant caspase involved in the cleavage of amyloid-beta 4A precursor protein, which is associated with neuronal death in Alzheimer's disease.

Recommended Dilutions

WB 1:500 - 1:1000

IF/ICC 1:50 - 1:200

Immunogen Information

Gene ID

836

Swiss Prot

P42574

Immunogen

Recombinant fusion protein containing a sequence corresponding to amino acids 29-175 of human Caspase-3 (NP_004337.2).

Synonyms

CPP32; SCA-1; CPP32B; -3

Contact



www.abclonal.com

Product Information

Source

Rabbit

Isotype

IgG

Purification

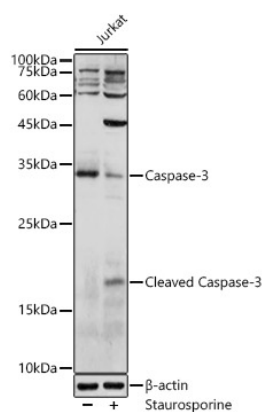
Affinity purification

Storage

Store at -20°C. Avoid freeze / thaw cycles.

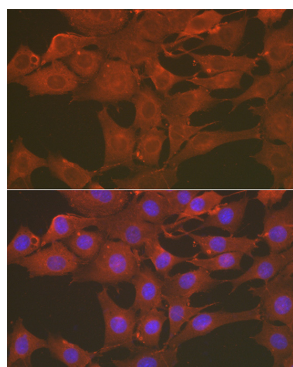
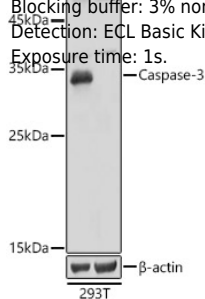
Buffer: PBS with 0.01% thimerosal, 50% glycerol, pH7.3.

Validation Data

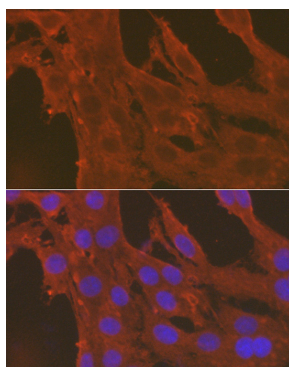


Western blot analysis of extracts of Jurkat cells, using Caspase-3 antibody (A11040) at 1:1000 dilution. Jurkat cells were treated by staurosporine (1 μ M) for 3 hours.
Secondary antibody: HRP Goat Anti-Rabbit IgG (H+L) (AS014) at 1:10000 dilution.
Lysates/proteins: 25 μ g per lane.
Blocking buffer: 3% nonfat dry milk in TBST.
Detection: ECL Basic Kit (RM00020).
Exposure time: 30s.

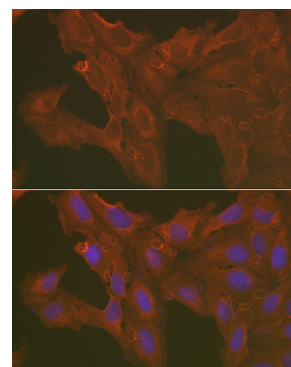
Western blot analysis of extracts from wild type (WT) and Caspase-3 knockout (KO) 293T cells, using Caspase-3 antibody (A11040) at 1:3000 dilution.
Secondary antibody: HRP Goat Anti-Rabbit IgG (H+L) (AS014) at 1:10000 dilution.
Lysates/proteins: 25 μ g per lane.
Blocking buffer: 3% nonfat dry milk in TBST.
Detection: ECL Basic Kit (RM00020).
Exposure time: 1s.



Immunofluorescence analysis of NIH/3T3 cells using [KO Validated] Caspase-3 Rabbit pAb (A11040) at dilution of 1:100 (40x lens). Blue: DAPI for nuclear staining.



Immunofluorescence analysis of PC-12 cells using [KO Validated] Caspase-3 Rabbit pAb (A11040) at dilution of 1:100 (40x lens). Blue: DAPI for nuclear staining.



Immunofluorescence analysis of U2OS cells using [KO Validated] Caspase-3 Rabbit pAb (A11040) at dilution of 1:100 (40x lens). Blue: DAPI for nuclear staining.