

Cyclin D1 Rabbit pAb

Catalog No.: A11022 **24 Publications**

Basic Information

Observed MW

35kDa

Calculated MW

34kDa

Category

Primary antibody

Applications

ELISA, WB, IHC-P, IF/ICC, IP

Cross-Reactivity

Human, Mouse, Rat

Background

The protein encoded by this gene belongs to the highly conserved cyclin family, whose members are characterized by a dramatic periodicity in protein abundance throughout the cell cycle. Cyclins function as regulators of CDK kinases. Different cyclins exhibit distinct expression and degradation patterns which contribute to the temporal coordination of each mitotic event. This cyclin forms a complex with and functions as a regulatory subunit of CDK4 or CDK6, whose activity is required for cell cycle G1/S transition. This protein has been shown to interact with tumor suppressor protein Rb and the expression of this gene is regulated positively by Rb. Mutations, amplification and overexpression of this gene, which alters cell cycle progression, are observed frequently in a variety of human cancers.

Recommended Dilutions

WB 1:500 - 1:1000**IHC-P** 1:50 - 1:200**IF/ICC** 1:50 - 1:200**IP** 0.5µg-4µg antibody for
200µg-400µg extracts of
whole cells

Immunogen Information

Gene ID

595

Swiss Prot

P24385

Immunogen

Recombinant fusion protein containing a sequence corresponding to amino acids 200-295 of human Cyclin D1 (NP_444284.1).

Synonyms

BCL1; PRAD1; U21B31; D11S287E; Cyclin D1

Contact

 | www.abclonal.com

Product Information

Source

Rabbit

Isotype

IgG

Purification

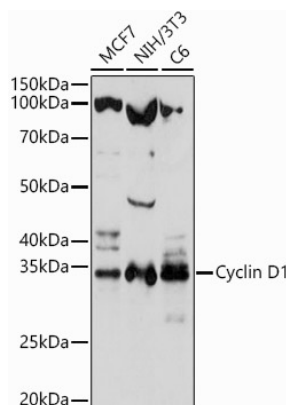
Affinity purification

Storage

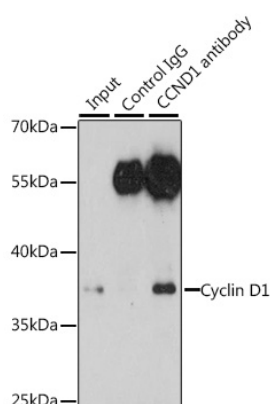
Store at -20°C. Avoid freeze / thaw cycles.

Buffer: PBS with 0.01% thimerosal, 50% glycerol, pH7.3.

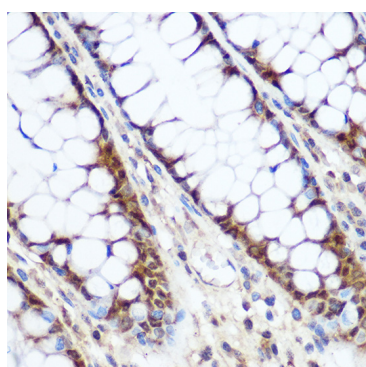
Validation Data



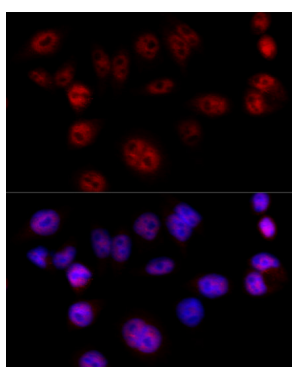
Western blot analysis of various lysates using Cyclin D1 Rabbit pAb (A11022) at 1:1000 dilution. Secondary antibody: HRP Goat Anti-Rabbit IgG (H+L) (AS014) at 1:10000 dilution. Lysates/proteins: 25µg per lane. Blocking buffer: 3% nonfat dry milk in TBST. Detection: ECL Basic Kit (RM00020). Exposure time: 30s.



Immunoprecipitation analysis of 200 µg extracts of HepG2 cells, using 3 µg Cyclin D1 antibody (A11022). Western blot was performed from the immunoprecipitate using Cyclin D1 antibody (A11022) at a dilution of 1:1000.



Immunohistochemistry analysis of Cyclin D1 in paraffin-embedded human colon using Cyclin D1 Rabbit pAb (A11022) at dilution of 1:100 (40x lens). Perform microwave antigen retrieval with 10 mM Tris/EDTA buffer pH 9.0 before commencing with IHC staining protocol.



Immunofluorescence analysis of HeLa cells using Cyclin D1 Rabbit pAb (A11022) at dilution of 1:100 (40x lens). Secondary antibody: Cy3 Goat Anti-Rabbit IgG (H+L) (AS007) at 1:500 dilution. Blue: DAPI for nuclear staining.