

A11013

Leader in Biomolecular Solutions for Life Science



## Alpha-Fetoprotein (AFP) Rabbit pAb

Catalog No.: A11013

### Basic Information

#### Observed MW

68kDa

#### Calculated MW

69kDa

#### Category

Mouse Monoclonal Antibody

#### Applications

WB, IF/ICC, ELISA

#### Cross-Reactivity

Human, Mouse

### Background

This gene encodes alpha-fetoprotein, a major plasma protein produced by the yolk sac and the liver during fetal life. Alpha-fetoprotein expression in adults is often associated with hepatocarcinoma and with teratoma, and has prognostic value for managing advanced gastric cancer. However, hereditary persistence of alpha-fetoprotein may also be found in individuals with no obvious pathology. The protein is thought to be the fetal counterpart of serum albumin, and the alpha-fetoprotein and albumin genes are present in tandem in the same transcriptional orientation on chromosome 4. Alpha-fetoprotein is found in monomeric as well as dimeric and trimeric forms, and binds copper, nickel, fatty acids and bilirubin. The level of alpha-fetoprotein in amniotic fluid is used to measure renal loss of protein to screen for spina bifida and anencephaly.

### Recommended Dilutions

WB	1:500 - 1:2000
IF/ICC	1:50 - 1:200

### Immunogen Information

#### Gene ID

174

#### Swiss Prot

P02771

#### Immunogen

Recombinant fusion protein containing a sequence corresponding to amino acids 450-550 of Alpha-Fetoprotein (AFP) (NP\_001125.1).

#### Synonyms

AFPD; FETA; HPAFP; Alpha-Fetoprotein (AFP)

### Contact



[www.abclonal.com](http://www.abclonal.com)

### Product Information

#### Source

Rabbit

#### Isotype

IgG

#### Purification

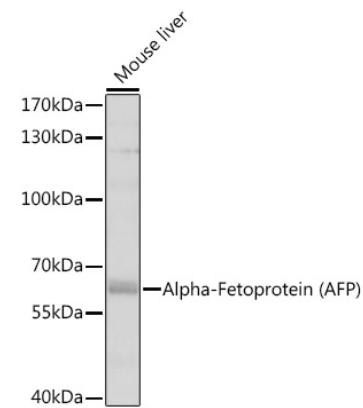
Affinity purification

#### Storage

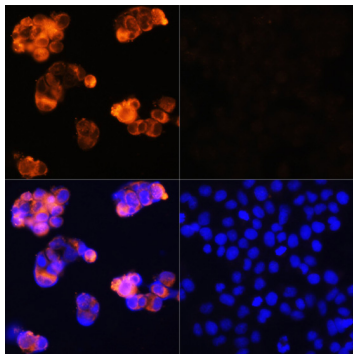
Store at -20°C. Avoid freeze / thaw cycles.

Buffer: PBS with 0.01% thimerosal, 50% glycerol, pH7.3.

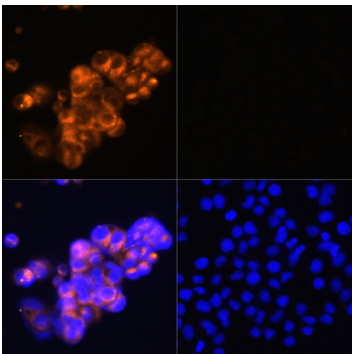
Validation Data



Western blot analysis of extracts of mouse liver, using Alpha-Fetoprotein (Alpha-Fetoprotein (AFP)) antibody (A11013) at 1:1000 dilution.  
Secondary antibody: HRP Goat Anti-Rabbit IgG (H+L) (AS014) at 1:10000 dilution.  
Lysates/proteins: 25µg per lane.  
Blocking buffer: 3% nonfat dry milk in TBST.  
Detection: ECL Enhanced Kit (RM00021).  
Exposure time: 60s.



Immunofluorescence analysis of HepG2 cells (upper left) and LO2 cells (negative sample control) (upper right) using Alpha-Fetoprotein (Alpha-Fetoprotein (AFP)) Rabbit pAb (red, A11013) at dilution of 1:100. Blue: DAPI for nuclear staining.



Immunofluorescence analysis of HepG2 cells (upper left) and LO2 cells (negative sample control) (upper right) using Alpha-Fetoprotein (Alpha-Fetoprotein (AFP)) Rabbit pAb (red, A17457) at dilution of 1:100. Blue: DAPI for nuclear staining.