

A1098

Leader in Biomolecular Solutions for Life Science



## HP1 alpha/CBX5 Rabbit pAb

Catalog No.: A1098

1 Publications

### Basic Information

#### Observed MW

22kDa

#### Calculated MW

22kDa

#### Category

Polyclonal Antibody

#### Applications

WB,IF/ICC,IP,ChIP,ELISA

#### Cross-Reactivity

Human,Rat

### Background

This gene encodes a highly conserved nonhistone protein, which is a member of the heterochromatin protein family. The protein is enriched in the heterochromatin and associated with centromeres. The protein has a single N-terminal chromodomain which can bind to histone proteins via methylated lysine residues, and a C-terminal chromo shadow-domain (CSD) which is responsible for the homodimerization and interaction with a number of chromatin-associated nonhistone proteins. The encoded product is involved in the formation of functional kinetochore through interaction with essential kinetochore proteins. The gene has a pseudogene located on chromosome 3. Multiple alternatively spliced variants, encoding the same protein, have been identified.

### Recommended Dilutions

WB 1:500 - 1:2000

IF/ICC 1:50 - 1:200

IP 0.5µg-4µg antibody for  
200µg-400µg extracts of  
whole cells

ChIP 1:20 - 1:100

### Immunogen Information

#### Gene ID

23468

#### Swiss Prot

P45973

#### Immunogen

Recombinant fusion protein containing a sequence corresponding to amino acids 1-191 of human HP1 alpha/HP1 alpha/CBX5 (NP\_001120794.1).

#### Synonyms

HP1; HP1A; HEL25; HP1 alpha/CBX5

### Contact



[www.abclonal.com](http://www.abclonal.com)

### Product Information

#### Source

Rabbit

#### Isotype

IgG

#### Purification

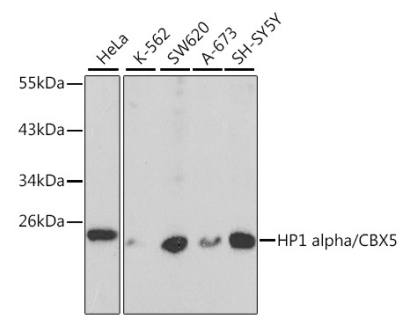
Affinity purification

#### Storage

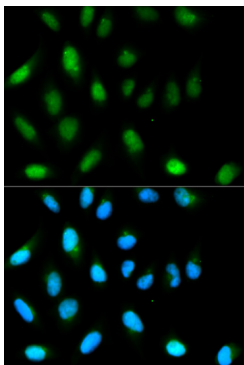
Store at -20°C. Avoid freeze / thaw cycles.

Buffer: PBS with 0.02% sodium azide, 50% glycerol, pH 7.3.

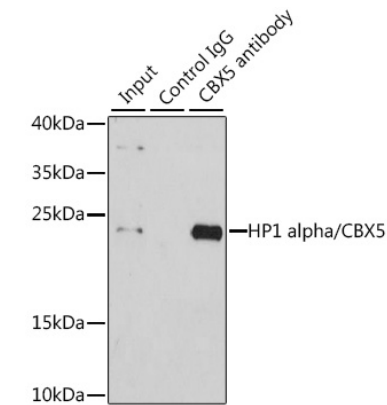
Validation Data



Western blot analysis of various lysates using HP1 alpha/CBX5 Rabbit pAb (A1098) at 1:1000 dilution.  
Secondary antibody: HRP Goat Anti-Rabbit IgG (H+L) (AS014) at 1:10000 dilution.  
Lysates/proteins: 25µg per lane.  
Blocking buffer: 3% nonfat dry milk in TBST.



Immunofluorescence analysis of HeLa cells using HP1 alpha/CBX5 Rabbit pAb (A1098).  
Secondary antibody: Cy3 Goat Anti-Rabbit IgG (H+L) (AS007) at 1:500 dilution. Blue: DAPI for nuclear staining.



Immunoprecipitation analysis of 200 µg extracts of HeLa cells using 1 µg HP1 alpha/HP1 alpha/CBX5 antibody (A1098). Western blot was performed from the immunoprecipitate using HP1 alpha/HP1 alpha/CBX5 antibody (A1098) at a dilution of 1:1000.