

A10785

Leader in Biomolecular Solutions for Life Science



## EIF1 Rabbit pAb

Catalog No.: A10785

### Basic Information

**Observed MW**

13kDa

**Calculated MW**

13kDa

**Category**

Polyclonal Antibody

**Applications**

WB, ELISA

**Cross-Reactivity**

Human, Mouse

### Background

Enables RNA binding activity. Involved in regulation of translational initiation. Located in cytoplasm and nucleus.

### Recommended Dilutions

WB 1:500 - 1:2000

### Immunogen Information

**Gene ID**

10209

**Swiss Prot**

P41567

**Immunogen**

Recombinant fusion protein containing a sequence corresponding to amino acids 1-113 of human EIF1 (NP\_005792.1).

**Synonyms**

A121; ISO1; SUI1; EIF-1; EIF1A; EIF1

### Contact



[www.abclonal.com](http://www.abclonal.com)

### Product Information

**Source**

Rabbit

**Isotype**

IgG

**Purification**

Affinity purification

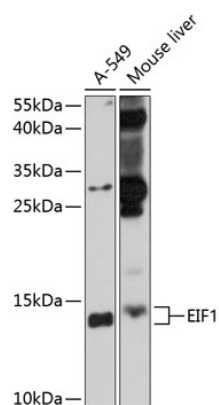
**Storage**

Store at -20°C. Avoid freeze / thaw cycles.

Buffer: PBS with 0.01% thimerosal, 50% glycerol, pH 7.3.

## Validation Data

---



Western blot analysis of various lysates using EIF1 Rabbit pAb (A10785) at 1:1000 dilution.  
Secondary antibody: HRP Goat Anti-Rabbit IgG (H+L) (A5014) at 1:10000 dilution.  
Lysates/proteins: 25µg per lane.  
Blocking buffer: 3% nonfat dry milk in TBST.  
Detection: ECL Basic Kit (RM00020).  
Exposure time: 90s.