

A10776

Leader in Biomolecular Solutions for Life Science



ZP1 Rabbit pAb

Catalog No.: A10776

2 Publications

Basic Information

Observed MW

70kDa

Calculated MW

70kDa

Category

Mouse Monoclonal Antibody

Applications

WB, ELISA

Cross-Reactivity

Human, Mouse, Rat

Background

The zona pellucida is an extracellular matrix that surrounds the oocyte and early embryo. It is composed primarily of three or four glycoproteins with various functions during fertilization and preimplantation development. The protein encoded by this gene ensures the structural integrity of the zona pellucida. Mutations in this gene are a cause of oocyte maturation defect and infertility.

Recommended Dilutions

WB 1:500 - 1:2000

Immunogen Information

Gene ID

22917

Swiss Prot

P60852

Immunogen

Recombinant fusion protein containing a sequence corresponding to amino acids 340-610 of human ZP1 (NP_997224.2).

Synonyms

OOMD; ZPB1; OOMD1; HEL163; OZEMA1; ZP1

Contact



www.abclonal.com

Product Information

Source

Rabbit

Isotype

IgG

Purification

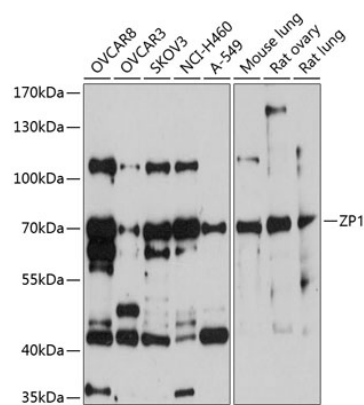
Affinity purification

Storage

Store at -20°C. Avoid freeze / thaw cycles.

Buffer: PBS with 0.01% thimerosal, 50% glycerol, pH 7.3.

Validation Data



Western blot analysis of various lysates using ZP1 Rabbit pAb (A10776) at 1:1000 dilution.
Secondary antibody: HRP Goat Anti-Rabbit IgG (H+L) (AS014) at 1:10000 dilution.
Lysates/proteins: 25µg per lane.
Blocking buffer: 3% nonfat dry milk in TBST.
Detection: ECL Basic Kit (RM00020).
Exposure time: 90s.