

A10767

Leader in Biomolecular Solutions for Life Science



## KLK14 Rabbit pAb

Catalog No.: A10767

### Basic Information

**Observed MW**

29kDa

**Calculated MW**

29kDa

**Category**

Polyclonal Antibody

**Applications**

WB, ELISA

**Cross-Reactivity**

Mouse

### Background

This gene encodes a member of the kallikrein subfamily of serine proteases that have diverse physiological functions such as regulation of blood pressure and desquamation. The altered expression of this gene is implicated in the progression of different cancers including breast and prostate tumors. The encoded protein is a precursor that is proteolytically processed to generate the functional enzyme. This gene is one of the fifteen kallikrein subfamily members located in a cluster on chromosome 19. Alternative splicing results in multiple transcript variants.

### Recommended Dilutions

WB 1:500 - 1:2000

### Immunogen Information

**Gene ID**

43847

**Swiss Prot**

Q9P0G3

**Immunogen**

Recombinant fusion protein containing a sequence corresponding to amino acids 41-267 of human KLK14 (NP\_071329.2).

**Synonyms**

KLK-L6; KLK14

### Contact



[www.abclonal.com](http://www.abclonal.com)

### Product Information

**Source**

Rabbit

**Isotype**

IgG

**Purification**

Affinity purification

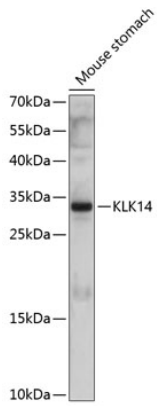
**Storage**

Store at -20°C. Avoid freeze / thaw cycles.

Buffer: PBS with 0.01% thimerosal, 50% glycerol, pH 7.3.

## Validation Data

---



Western blot analysis of lysates from mouse stomach, using KLK14 Rabbit pAb (A10767) at 1:1000 dilution.

Secondary antibody: HRP Goat Anti-Rabbit IgG (H+L) (AS014) at 1:10000 dilution.

Lysates/proteins: 25µg per lane.

Blocking buffer: 3% nonfat dry milk in TBST.

Detection: ECL Basic Kit (RM00020).

Exposure time: 10s.