

A10737

Leader in Biomolecular Solutions for Life Science



POLR3A Rabbit pAb

Catalog No.: A10737

Basic Information

Observed MW

156kDa

Calculated MW

156kDa

Category

Polyclonal Antibody

Applications

WB, ELISA

Cross-Reactivity

Human

Background

The protein encoded by this gene is the catalytic component of RNA polymerase III, which synthesizes small RNAs. The encoded protein also acts as a sensor to detect foreign DNA and trigger an innate immune response.

Recommended Dilutions

WB 1:500 - 1:2000

Immunogen Information

Gene ID

11128

Swiss Prot

O14802

Immunogen

Recombinant fusion protein containing a sequence corresponding to amino acids 1-200 of human POLR3A (NP_008986.2).

Synonyms

ADDH; C160; HLD7; RPC1; WDRTS; RPC155; hRPC155; POLR3A

Contact



www.abclonal.com

Product Information

Source

Rabbit

Isotype

IgG

Purification

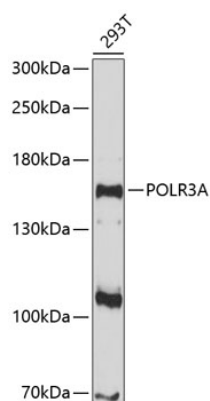
Affinity purification

Storage

Store at -20°C. Avoid freeze / thaw cycles.

Buffer: PBS with 0.01% thimerosal, 50% glycerol, pH 7.3.

Validation Data



Western blot analysis of lysates from 293T cells, using POLR3A Rabbit pAb (A10737) at 1:1000 dilution.
Secondary antibody: HRP Goat Anti-Rabbit IgG (H+L) (A5014) at 1:10000 dilution.
Lysates/proteins: 25µg per lane.
Blocking buffer: 3% nonfat dry milk in TBST.
Detection: ECL Enhanced Kit (RM00021).
Exposure time: 90s.