

A10670

Leader in Biomolecular Solutions for Life Science



## CCL1 Rabbit pAb

Catalog No.: A10670

### Basic Information

**Observed MW**

14kDa

**Calculated MW**

11kDa

**Category**

Polyclonal Antibody

**Applications**

WB, ELISA

**Cross-Reactivity**

Human

### Background

This antimicrobial gene is one of several chemokine genes clustered on the q-arm of chromosome 17. Chemokines form a superfamily of secreted proteins involved in immunoregulatory and inflammatory processes. The superfamily is divided into four subfamilies based on the arrangement of the N-terminal cysteine residues of the mature peptide. This chemokine, a member of the CC subfamily, is secreted by activated T cells and displays chemotactic activity for monocytes but not for neutrophils. It binds to the chemokine (C-C motif) receptor 8.

### Recommended Dilutions

WB 1:500 - 1:1000

### Immunogen Information

**Gene ID**

6346

**Swiss Prot**

P22362

**Immunogen**

Recombinant fusion protein containing a sequence corresponding to amino acids 24-96 of human CCL1 (NP\_002972.1).

**Synonyms**

P500; S1Se; TCA3; I-309; SCYA1; CCL1

### Contact



[www.abclonal.com](http://www.abclonal.com)

### Product Information

**Source**

Rabbit

**Isotype**

IgG

**Purification**

Affinity purification

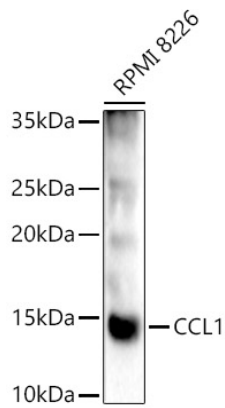
**Storage**

Store at -20°C. Avoid freeze / thaw cycles.

Buffer: PBS with 0.02% sodium azide, 50% glycerol, pH 7.3.

## Validation Data

---



Western blot analysis of lysates from RPMI 8226 cells, using CCL1 Rabbit pAb (A10670) at 1:1000 dilution.  
Secondary antibody: HRP Goat Anti-Rabbit IgG (H+L) (AS014) at 1:10000 dilution.  
Lysates/proteins: 25ug per lane.  
Blocking buffer: 3% nonfat dry milk in TBST.  
Detection: ECL Basic Kit (RM00020).  
Exposure time: 90s.