

A10581

Leader in Biomolecular Solutions for Life Science



KLF1 Rabbit pAb

Catalog No.: A10581

Basic Information

Observed MW

38kDa

Calculated MW

38kDa

Category

Polyclonal Antibody

Applications

WB, ELISA

Cross-Reactivity

Rat

Background

This gene encodes a hematopoietic-specific transcription factor that induces high-level expression of adult beta-globin and other erythroid genes. The zinc-finger protein binds to the DNA sequence CCACACCCT found in the beta hemoglobin promoter. Heterozygous loss-of-function mutations in this gene result in the dominant In(Lu) blood phenotype.

Recommended Dilutions

WB 1:500 - 1:1000

Immunogen Information

Gene ID

10661

Swiss Prot

Q13351

Immunogen

A synthetic peptide corresponding to a sequence within amino acids 1-100 of human KLF1 (NP_006554.1).

Synonyms

EKLF; EKLF/KLF1; KLF1

Contact



www.abclonal.com

Product Information

Source

Rabbit

Isotype

IgG

Purification

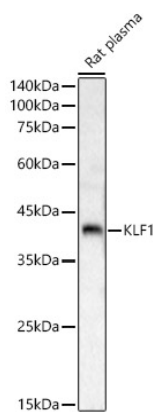
Affinity purification

Storage

Store at -20°C. Avoid freeze / thaw cycles.

Buffer: PBS with 0.05% proclin300, 50% glycerol, pH7.3.

Validation Data



Western blot analysis of Rat plasma, using KLF1 antibody (A10581) at 1:1000 dilution.
Secondary antibody: HRP Goat Anti-Rabbit IgG (H+L) (A5014) at 1:10000 dilution.
Lysates/proteins: 25µg per lane.
Blocking buffer: 3% nonfat dry milk in TBST.
Detection: ECL Basic Kit (RM00020).
Exposure time: 90s.