

A10538

Leader in Biomolecular Solutions for Life Science



## P4HA1 Rabbit pAb

Catalog No.: A10538

2 Publications

### Basic Information

#### Observed MW

61kDa

#### Calculated MW

61kDa

#### Category

Polyclonal Antibody

#### Applications

WB,IF/ICC,ELISA

#### Cross-Reactivity

Human,Mouse,Rat

### Background

This gene encodes a component of prolyl 4-hydroxylase, a key enzyme in collagen synthesis composed of two identical alpha subunits and two beta subunits. The encoded protein is one of several different types of alpha subunits and provides the major part of the catalytic site of the active enzyme. In collagen and related proteins, prolyl 4-hydroxylase catalyzes the formation of 4-hydroxyproline that is essential to the proper three-dimensional folding of newly synthesized procollagen chains. Alternatively spliced transcript variants encoding different isoforms have been described.

### Recommended Dilutions

WB	1:100 - 1:500
IF/ICC	1:50 - 1:200

### Immunogen Information

#### Gene ID

5033

#### Swiss Prot

P13674

#### Immunogen

A synthetic peptide corresponding to a sequence within amino acids 235-534 of human P4HA1 (NP\_001017962.1).

#### Synonyms

P4HA; P4HA1

### Contact



[www.abclonal.com](http://www.abclonal.com)

### Product Information

#### Source

Rabbit

#### Isotype

IgG

#### Purification

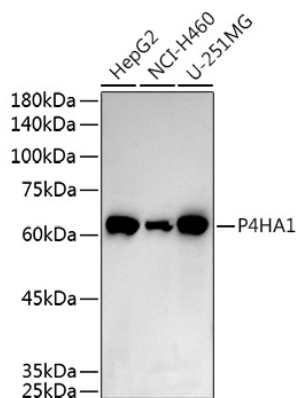
Affinity purification

#### Storage

Store at -20°C. Avoid freeze / thaw cycles.

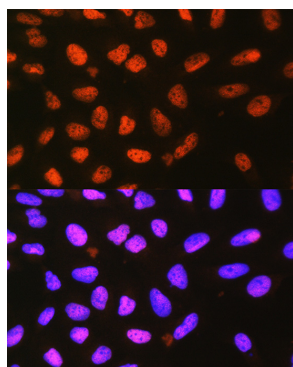
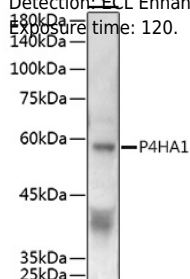
Buffer: PBS with 0.05% proclin300,50% glycerol,pH7.3.

## Validation Data



Western blot analysis of extracts of various cell lines, using P4HA1 antibody (A10538) at 1:500 dilution.  
 Secondary antibody: HRP Goat Anti-Rabbit IgG (H+L) (A5014) at 1:10000 dilution.  
 Lysates/proteins: 25µg per lane.  
 Blocking buffer: 3% nonfat dry milk in TBST.  
 Detection: ECL Enhanced Kit (RM00021).  
 Exposure time: 60s.

Western blot analysis of extracts of Rat skeletal muscle, using P4HA1 antibody (A10538) at 1:500 dilution.  
 Secondary antibody: HRP Goat Anti-Rabbit IgG (H+L) (A5014) at 1:10000 dilution.  
 Lysates/proteins: 25µg per lane.  
 Blocking buffer: 3% nonfat dry milk in TBST.  
 Detection: ECL Enhanced Kit (RM00021).  
 Exposure time: 120s.



Immunofluorescence analysis of L929 cells using P4HA1 Rabbit pAb (A10538) at dilution of 1:100 (40x lens). Blue: DAPI for nuclear staining.