

A10482

Leader in Biomolecular Solutions for Life Science



## TREM2 Rabbit pAb

Catalog No.: A10482

10 Publications

### Basic Information

#### Observed MW

55kDa

#### Calculated MW

25kDa

#### Category

Polyclonal Antibody

#### Applications

WB, IF/ICC, ELISA

#### Cross-Reactivity

Human, Mouse, Rat

### Background

This gene encodes a membrane protein that forms a receptor signaling complex with the TYRO protein tyrosine kinase binding protein. The encoded protein functions in immune response and may be involved in chronic inflammation by triggering the production of constitutive inflammatory cytokines. Defects in this gene are a cause of polycystic lipomembranous osteodysplasia with sclerosing leukoencephalopathy (PLOS). Alternative splicing results in multiple transcript variants encoding different isoforms.

### Recommended Dilutions

WB 1:1000 - 1:5000

IF/ICC 1:50 - 1:200

### Immunogen Information

#### Gene ID

54209

#### Swiss Prot

Q9NZC2

#### Immunogen

Recombinant fusion protein containing a sequence corresponding to amino acids 19-161 of human TREM2 (NP\_061838.1).

#### Synonyms

PLOSL2; TREM-2; Trem2a; Trem2b; Trem2c; TREM2

### Contact



[www.abclonal.com](http://www.abclonal.com)

### Product Information

#### Source

Rabbit

#### Isotype

IgG

#### Purification

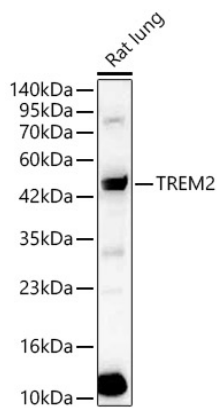
Affinity purification

#### Storage

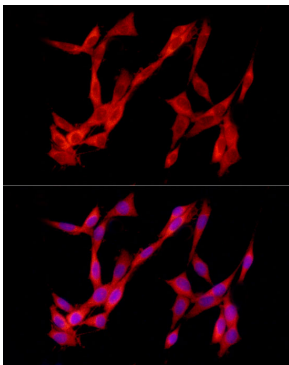
Store at -20°C. Avoid freeze / thaw cycles.

Buffer: PBS with 0.05% proclin300, 50% glycerol, pH7.3.

## Validation Data



Western blot analysis of lysates from Rat lung using TREM2 Rabbit pAb(A10482) at 1:2000 dilution.  
Secondary antibody:HRP Goat Anti-Rabbit IgG (H+L)(AS014) at 1:10000 dilution.  
Lysates/proteins: 25 µg per lane.  
Blocking buffer: 3% nonfat dry milk in TBST.  
Detection:ECL Basic Kit (RM00020).  
Exposure time:30s.



Immunofluorescence analysis of PC-12 cells using TREM2 Rabbit pAb (A10482) at dilution of 1:50 (40x lens). Secondary antibody: Cy3 Goat Anti-Rabbit IgG (H+L) (AS007) at 1:500 dilution. Blue: DAPI for nuclear staining.