

A10471

Leader in Biomolecular Solutions for Life Science



## GAPDHS Rabbit pAb

Catalog No.: A10471

4 Publications

### Basic Information

#### Observed MW

60kDa

#### Calculated MW

45kDa

#### Category

Polyclonal Antibody

#### Applications

WB, IHC-P, ELISA

#### Cross-Reactivity

Human, Mouse, Rat

### Background

This gene encodes a protein belonging to the glyceraldehyde-3-phosphate dehydrogenase family of enzymes that play an important role in carbohydrate metabolism. Like its somatic cell counterpart, this sperm-specific enzyme functions in a nicotinamide adenine dinucleotide-dependent manner to remove hydrogen and add phosphate to glyceraldehyde 3-phosphate to form 1,3-diphosphoglycerate. During spermiogenesis, this enzyme may play an important role in regulating the switch between different energy-producing pathways, and it is required for sperm motility and male fertility.

### Recommended Dilutions

WB	1:500 - 1:2000
IHC-P	1:50 - 1:200

### Immunogen Information

#### Gene ID

26330

#### Swiss Prot

O14556

#### Immunogen

Recombinant fusion protein containing a sequence corresponding to amino acids 179-408 of human GAPDHS (NP\_055179.1).

#### Synonyms

GAPD2; GAPDS; HSD-35; GAPDH-2; HEL-S-278; GAPDHS

### Contact



[www.abclonal.com](http://www.abclonal.com)

### Product Information

#### Source

Rabbit

#### Isotype

IgG

#### Purification

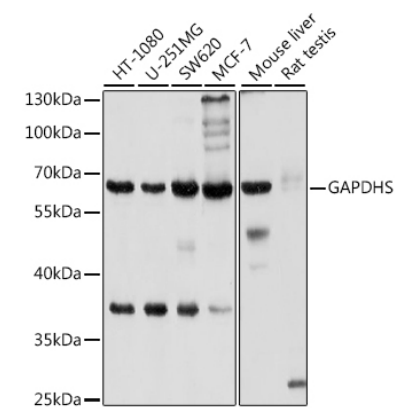
Affinity purification

#### Storage

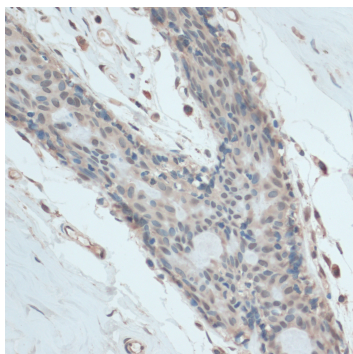
Store at -20°C. Avoid freeze / thaw cycles.

Buffer: PBS with 0.02% sodium azide, 50% glycerol, pH 7.3.

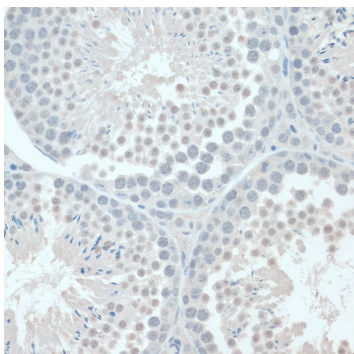
Validation Data



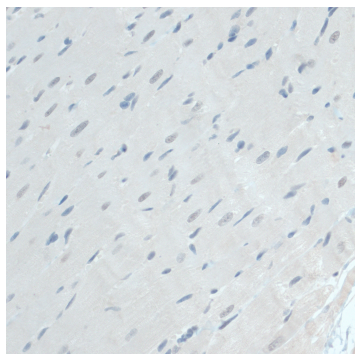
Western blot analysis of various lysates using GAPDHs Rabbit pAb (A10471) at 1:1000 dilution.  
Secondary antibody: HRP Goat Anti-Rabbit IgG (H+L) (A5014) at 1:10000 dilution.  
Lysates/proteins: 25µg per lane.  
Blocking buffer: 3% nonfat dry milk in TBST.  
Detection: ECL Basic Kit (RM00020).  
Exposure time: 3s.



Immunohistochemistry analysis of GAPDHs in paraffin-embedded human breast using GAPDHs Rabbit pAb (A10471) at dilution of 1:100 (40x lens).Perform microwave antigen retrieval with 10 mM PBS buffer pH 7.2 before commencing with IHC staining protocol



Immunohistochemistry analysis of GAPDHs in paraffin-embedded Mouse testis using GAPDHs Rabbit pAb (A10471) at dilution of 1:100 (40x lens).Perform microwave antigen retrieval with 10 mM PBS buffer pH 7.2 before commencing with IHC staining protocol



Immunohistochemistry analysis of GAPDHs in paraffin-embedded Rat heart using GAPDHs Rabbit pAb (A10471) at dilution of 1:100 (40x lens).Perform microwave antigen retrieval with 10 mM PBS buffer pH 7.2 before commencing with IHC staining protocol