

A10464

Leader in Biomolecular Solutions for Life Science



TMEFF2 Rabbit pAb

Catalog No.: A10464

Basic Information

Observed MW

41kDa

Calculated MW

41kDa

Category

Polyclonal Antibody

Applications

WB, ELISA

Cross-Reactivity

Human, Mouse, Rat

Background

This gene encodes a member of the tomoregulin family of transmembrane proteins. This protein has been shown to function as both an oncogene and a tumor suppressor depending on the cellular context and may regulate prostate cancer cell invasion. Multiple soluble forms of this protein have been identified that arise from both an alternative splice variant and ectodomain shedding. Additionally, this gene has been found to be hypermethylated in multiple cancer types. Alternative splicing results in multiple transcript variants.

Recommended Dilutions

WB 1:500 - 1:2000

Immunogen Information

Gene ID

23671

Swiss Prot

Q9UIK5

Immunogen

Recombinant fusion protein containing a sequence corresponding to amino acids 41-320 of human TMEFF2 (NP_057276.2).

Synonyms

TR; HPP1; TPEF; TR-2; TENB2; CT120.2; TMEFF2

Contact



www.abclonal.com

Product Information

Source

Rabbit

Isotype

IgG

Purification

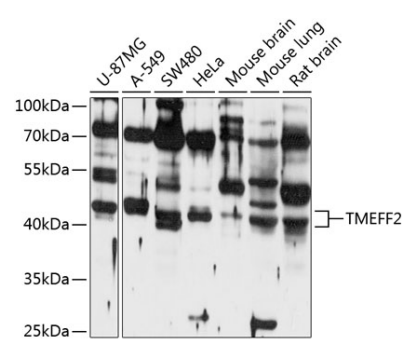
Affinity purification

Storage

Store at -20°C. Avoid freeze / thaw cycles.

Buffer: PBS with 0.02% sodium azide, 50% glycerol, pH 7.3.

Validation Data



Western blot analysis of various lysates using TMEFF2 Rabbit pAb (A10464) at 1:1000 dilution.
Secondary antibody: HRP Goat Anti-Rabbit IgG (H+L) (AS014) at 1:10000 dilution.
Lysates/proteins: 25µg per lane.
Blocking buffer: 3% nonfat dry milk in TBST.
Detection: ECL Basic Kit (RM00020).
Exposure time: 10s.