

A10433

Leader in Biomolecular Solutions for Life Science



SLC16A10 Rabbit pAb

Catalog No.: A10433

Basic Information

Observed MW

55kDa

Calculated MW

55kDa

Category

Mouse Monoclonal Antibody

Applications

WB, ELISA

Cross-Reactivity

Human

Background

SLC16A10 is a member of a family of plasma membrane amino acid transporters that mediate the Na(+)-independent transport of aromatic amino acids across the plasma membrane.

Recommended Dilutions

WB 1:500 - 1:2000

Immunogen Information

Gene ID

117247

Swiss Prot

Q8TF71

Immunogen

Recombinant fusion protein containing a sequence corresponding to amino acids 456-515 of human SLC16A10 (NP_061063.2).

Synonyms

TAT1; MCT10; PRO0813; SLC16A10

Contact



www.abclonal.com

Product Information

Source

Rabbit

Isotype

IgG

Purification

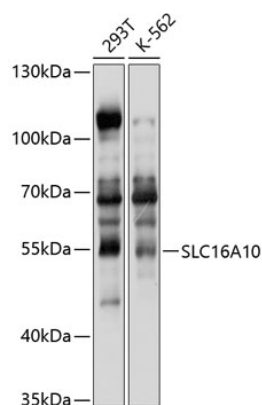
Affinity purification

Storage

Store at -20°C. Avoid freeze / thaw cycles.

Buffer: PBS with 0.02% sodium azide, 50% glycerol, pH 7.3.

Validation Data



Western blot analysis of extracts of various cell lines, using SLC16A10 antibody (A10433) at 1:1000 dilution.

Secondary antibody: HRP Goat Anti-Rabbit IgG (H+L) (AS014) at 1:10000 dilution.

Lysates/proteins: 25µg per lane.

Blocking buffer: 3% nonfat dry milk in TBST.

Detection: ECL Basic Kit (RM00020).

Exposure time: 10s.