

JTB Rabbit pAb

Catalog No.: A10427

Basic Information

Observed MW

16kDa

Calculated MW

16kDa

Category

Primary antibody

Applications

ELISA, WB

Cross-Reactivity

Human, Rat

Background

Enables protein kinase binding activity. Involved in mitotic cytokinesis and positive regulation of protein kinase activity. Located in cytoplasm and midbody. Colocalizes with centrosome and spindle.

Recommended Dilutions

WB 1:500 - 1:2000

Immunogen Information

Gene ID

10899

Swiss Prot

O76095

Immunogen

Recombinant fusion protein containing a sequence corresponding to amino acids 31-105 of human JTB (NP_006685.1).

Synonyms

PAR; hJT; HJTb; HSPC222; JTB

Contact

 | www.abclonal.com

Product Information

Source

Rabbit

Isotype

IgG

Purification

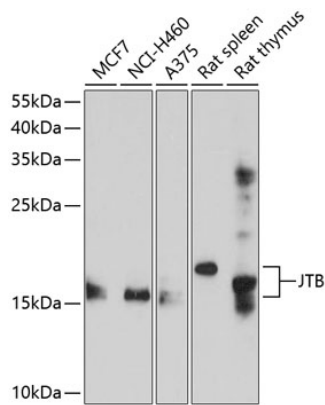
Affinity purification

Storage

Store at -20°C. Avoid freeze / thaw cycles.

Buffer: PBS with 0.02% sodium azide, 50% glycerol, pH 7.3.

Validation Data



Western blot analysis of extracts of various cell lines, using JTB antibody (A10427) at 1:1000 dilution.
Secondary antibody: HRP Goat Anti-Rabbit IgG (H+L) (AS014) at 1:10000 dilution.
Lysates/proteins: 25µg per lane.
Blocking buffer: 3% nonfat dry milk in TBST.
Detection: ECL Enhanced Kit (RM00021).
Exposure time: 60s.