

A10426

Leader in Biomolecular Solutions for Life Science



JOSD1 Rabbit pAb

Catalog No.: A10426

Basic Information

Observed MW

27kDa

Calculated MW

23kDa

Category

Polyclonal Antibody

Applications

WB, ELISA

Cross-Reactivity

Human, Mouse, Rat

Background

Predicted to enable thiol-dependent deubiquitinase. Predicted to be involved in protein deubiquitination. Located in membrane.

Recommended Dilutions

WB 1:500 - 1:2000

Immunogen Information

Gene ID

9929

Swiss Prot

Q15040

Immunogen

Recombinant fusion protein containing a sequence corresponding to amino acids 1-202 of human JOSD1 (NP_055691.1).

Synonyms

dj508l15.2; JOSD1

Contact



www.abclonal.com

Product Information

Source

Rabbit

Isotype

IgG

Purification

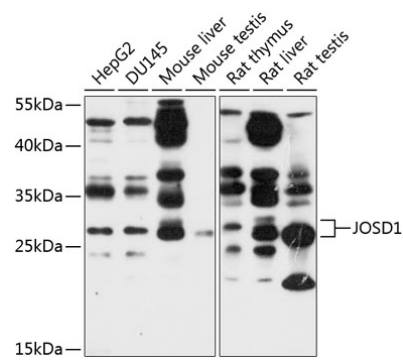
Affinity purification

Storage

Store at -20°C. Avoid freeze / thaw cycles.

Buffer: PBS with 0.02% sodium azide, 50% glycerol, pH7.3.

Validation Data



Western blot analysis of extracts of various cell lines, using JSD1 antibody (A10426) at 1:1000 dilution.
Secondary antibody: HRP Goat Anti-Rabbit IgG (H+L) (A5014) at 1:10000 dilution.
Lysates/proteins: 25µg per lane.
Blocking buffer: 3% nonfat dry milk in TBST.
Detection: ECL Basic Kit (RM00020).
Exposure time: 10s.