

A10401

Leader in Biomolecular Solutions for Life Science



## XPO6 Rabbit pAb

Catalog No.: A10401

### Basic Information

#### Observed MW

128kDa

#### Calculated MW

129kDa

#### Category

Mouse Monoclonal Antibody

#### Applications

WB, ELISA

#### Cross-Reactivity

Human, Mouse

### Background

The protein encoded by this gene is a member of the importin-beta family. Members of this family are regulated by the GTPase Ran to mediate transport of cargo across the nuclear envelope. This protein has been shown to mediate nuclear export of profilin-actin complexes. A pseudogene of this gene is located on the long arm of chromosome 14. Alternative splicing results in multiple transcript variants that encode different protein isoforms.

### Recommended Dilutions

WB 1:500 - 1:2000

### Immunogen Information

#### Gene ID

23214

#### Swiss Prot

Q96QU8

#### Immunogen

Recombinant fusion protein containing a sequence corresponding to amino acids 290-530 of human XPO6 (NP\_055986.1).

#### Synonyms

EXP6; RANBP20; XPO6

### Contact



[www.abclonal.com](http://www.abclonal.com)

### Product Information

#### Source

Rabbit

#### Isotype

IgG

#### Purification

Affinity purification

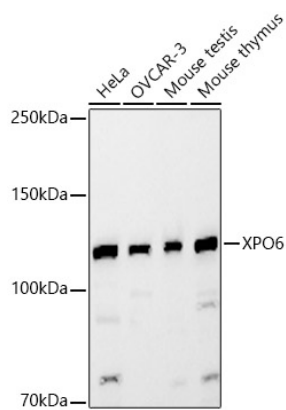
#### Storage

Store at -20°C. Avoid freeze / thaw cycles.

Buffer: PBS with 0.02% sodium azide, 50% glycerol, pH 7.3.

## Validation Data

---



Western blot analysis of various lysates, using XPO6 Rabbit pAb (A10401) at 1:2000 dilution.  
Secondary antibody: HRP Goat Anti-Rabbit IgG (H+L) (AS014) at 1:10000 dilution.  
Lysates/proteins: 25ug per lane.  
Blocking buffer: 3% nonfat dry milk in TBST.  
Detection: ECL Basic Kit (RM00020).  
Exposure time: 30s.