

A10378

Leader in Biomolecular Solutions for Life Science



SLC6A12 Rabbit pAb

Catalog No.: A10378

Basic Information

Observed MW

69kDa

Calculated MW

69kDa

Category

Polyclonal Antibody

Applications

WB, ELISA

Cross-Reactivity

Human

Background

Enables monocarboxylic acid transmembrane transporter activity. Involved in monocarboxylic acid transport. Predicted to be located in plasma membrane. Predicted to be integral component of membrane. Predicted to be active in neuron projection. Predicted to be integral component of plasma membrane.

Recommended Dilutions

WB 1:500 - 1:2000

Immunogen Information

Gene ID

6539

Swiss Prot

P48065

Immunogen

Recombinant fusion protein containing a sequence corresponding to amino acids 515-614 of human SLC6A12 (NP_003035.3).

Synonyms

BGT1; GAT2; BGT-1; SLC6A12

Contact



www.abclonal.com

Product Information

Source

Rabbit

Isotype

IgG

Purification

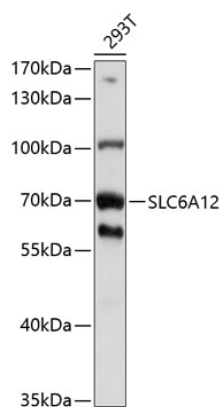
Affinity purification

Storage

Store at -20°C. Avoid freeze / thaw cycles.

Buffer: PBS with 0.02% sodium azide, 50% glycerol, pH 7.3.

Validation Data



Western blot analysis of extracts of 293T cells, using SLC6A12 antibody (A10378) at 1:1000 dilution.
Secondary antibody: HRP Goat Anti-Rabbit IgG (H+L) (A5014) at 1:10000 dilution.
Lysates/proteins: 25µg per lane.
Blocking buffer: 3% nonfat dry milk in TBST.
Detection: ECL Basic Kit (RM00020).
Exposure time: 5s.