

A10374

Leader in Biomolecular Solutions for Life Science



KLHL26 Rabbit pAb

Catalog No.: A10374

Basic Information

Observed MW

70kDa

Calculated MW

68kDa

Category

Mouse Monoclonal Antibody

Applications

WB, ELISA

Cross-Reactivity

Human, Rat

Background

Recommended Dilutions

WB 1:500 - 1:2000

Immunogen Information

Gene ID

55295

Swiss Prot

Q53HC5

Immunogen

Recombinant fusion protein containing a sequence corresponding to amino acids 366-615 of human KLHL26 (NP_060786.1).

Synonyms

KLHL26

Contact



www.abclonal.com

Product Information

Source

Rabbit

Isotype

IgG

Purification

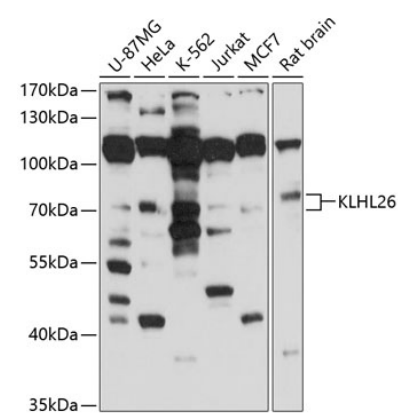
Affinity purification

Storage

Store at -20°C. Avoid freeze / thaw cycles.

Buffer: PBS with 0.02% sodium azide, 50% glycerol, pH 7.3.

Validation Data



Western blot analysis of extracts of various cell lines, using KLHL26 antibody (A10374) at 1:1000 dilution.
Secondary antibody: HRP Goat Anti-Rabbit IgG (H+L) (A5014) at 1:10000 dilution.
Lysates/proteins: 25µg per lane.
Blocking buffer: 3% nonfat dry milk in TBST.
Detection: ECL Basic Kit (RM00020).
Exposure time: 10s.